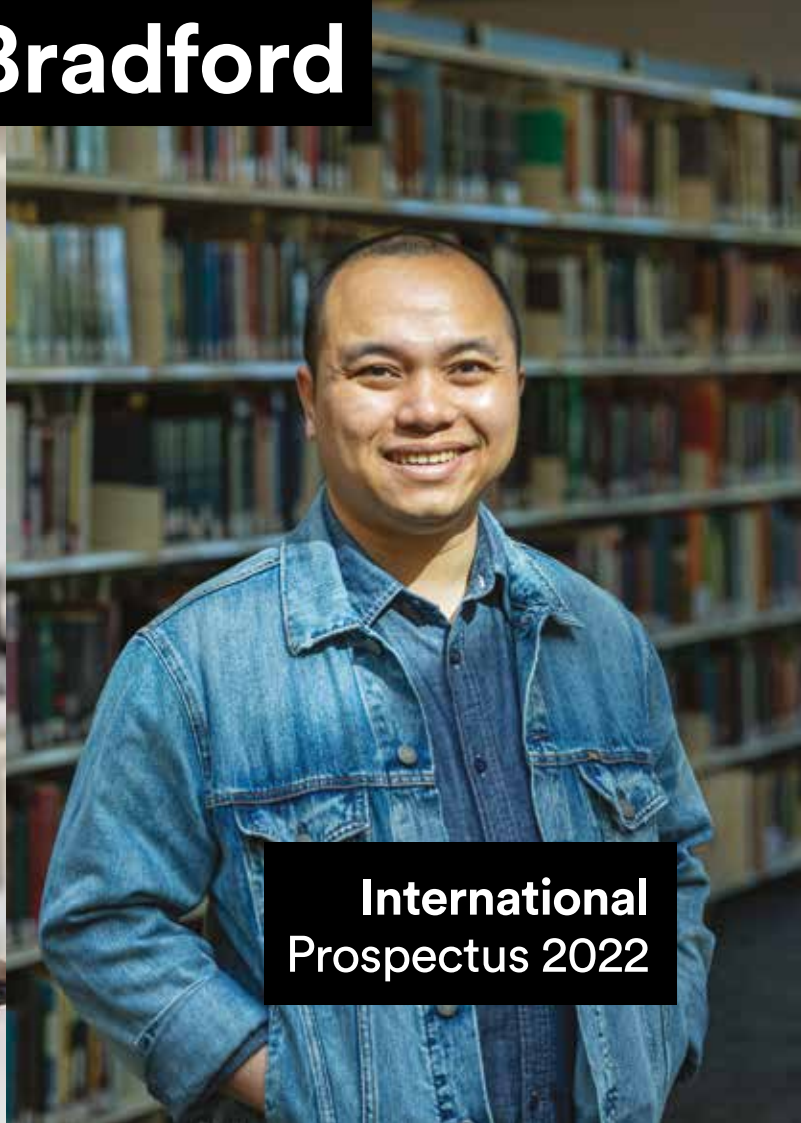


**This is education**

**This is Bradford**



**International  
Prospectus 2022**

# A key to the main course areas listed

## 20 University of Bradford International College

- 21 International Foundation Year [IFY]
- 21 The International Year Zero [IYZ]
- 22 The International Year One [IY1]
- 22 International Incorporated Master's [IIM]

## 24 Faculty of Engineering and Informatics

### 24 Undergraduate Course Areas

- 24 Chemical Engineering
- 25 Civil and Structural Engineering
- 26 Mechanical Engineering
- 27 Medical and Healthcare Technology
- 28 Computer Science
- 29 Film and Television Production
- 30 Animation, Games and Visual Effects
- 31 Virtual and Augmented Reality
- 32 Applied Artificial Intelligence

### 34 Postgraduate Course Areas

- 34 Advanced Biomedical Engineering
- 34 Advanced Chemical and Petroleum Engineering
- 35 Advanced Civil and Structural Engineering
- 35 Advanced Mechanical Engineering
- 36 Automotive Systems Engineering
- 36 Construction and Project Management
- 37 Big Data Science and Technology
- 37 Cyber Security
- 38 Internet of Things
- 38 Filmmaking
- 39 Smart Grids and Energy Systems

## 40 Faculty of Health Studies

### 40 Undergraduate Course Areas

- 40 Public Health and Community Wellbeing
- 41 Nursing
- 42 Occupational Therapy
- 43 Physiotherapy
- 44 MPhysiotherapy – Sport and Exercise Medicine

### 46 Postgraduate Course Areas

- 46 Advanced Dementia Studies
- 46 International Nursing Studies
- 47 Public Health (Master of Public Health)
- 48 Leadership in Health and Social Care (International)
- 48 Occupational Science
- 49 PhD (Faculty of Health Studies) Doctorate

## 50 Faculty of Life Sciences

### 50 Undergraduate Course Areas

- 50 Archaeology and Archaeological Sciences
- 51 Biomedical Science
- 52 Chemistry
- 53 Clinical Sciences
- 54 Forensic and Medical Sciences
- 55 Optometry
- 56 Pharmacy

### 58 Postgraduate Course Areas

- 58 Archaeology and Identity
- 58 Archaeological Sciences
- 59 Forensic Archaeology and Crime Scene Investigation
- 59 Human Osteology and Palaeopathology
- 60 Landscape Archaeology and Digital Heritage
- 60 Analytical Sciences
- 61 Bioinformatics
- 61 Materials Chemistry
- 62 Medical Bioscience
- 62 Skin Science and Stem Cell Biology
- 63 Cancer Drug Discovery
- 63 Cancer Pharmacology
- 64 Drug Toxicology and Safety Pharmacology
- 64 Pharmaceutical Technology and Medicines Control
- 65 Master by Research (MRes)
- 66 PhD (School of Pharmacy & Medical Sciences) Doctorate
- 66 Doctorate in Medicine (MD)

## 68 Faculty of Management, Law and Social Sciences

### 68 Undergraduate Course Areas

- 68 Accounting and Finance
- 69 Economics and Finance
- 70 Business, Management and Marketing
- 71 Management and Business Analytics
- 72 Finance and Business Analytics
- 73 Human Resource Management
- 74 Business Studies and Law
- 75 International Relations, Politics and Security Studies
- 76 Law
- 77 Psychology
- 78 Sociology and Criminology
- 79 Social Work and Social Care

## 80 Postgraduate Course Areas

- 80 Finance and Investment
- 81 Accounting and Finance
- 81 Financial Technology
- 82 Human Resource Management
- 82 Logistics, Data Analytics and Supply Chain Management
- 83 Applied Artificial Intelligence and Data Analytics
- 83 Digital and Strategic Marketing Management
- 84 Finance, Accounting and Management
- 85 Marketing and Management
- 85 International Business and Management
- 86 European and International Business Management
- 88 International Legal Studies
- 89 International Commercial Law (LLM)
- 90 International Human Rights Law and Development (LLM)
- 91 Natural Resources and Environmental Law and Policy (LLM)
- 92 Executive MBA in Dubai
- 92 MBA Distance Learning
- 93 Innovation, Enterprise and Circular Economy MBA
- 94 Executive DBA
- 95 Economics and Finance for Development
- 95 International Development Management
- 96 Project Planning and Management
- 96 Sustainable Development
- 97 Advanced Practice in Peacebuilding and Conflict Resolution
- 97 International Relations and Security Studies
- 98 Peace, Conflict and Development
- 98 Peace, Resilience and Social Justice
- 99 Psychology
- 99 Psychology of Health and Wellbeing
- 100 Social Work
- 101 PhD (School of Management School of Law School of Social Sciences)

# Contents

<b>02</b>	<b>Choose the University of Bradford</b>
02	Welcome from the Vice-Chancellor
03	This is education – This is Bradford
04	Your future
05	Spectacular surroundings, in the heart of the UK
<b>06</b>	<b>Student life</b>
06	Your Students' Union
07	Team Bradford
08	The University of Bradford campus
09	Student services and support
10	Accommodation 'This is home from home'
12	Opportunities abroad
<b>13</b>	<b>Applying to Bradford</b>
13	The application process
14	English language requirements and pathways to study
16	Scholarships and living costs
17	Tuition fees
<b>18</b>	<b>Our courses</b>
18	Research degrees
19	Research strengths by faculty
20	University of Bradford International College
<b>24</b>	<b>Faculty of Engineering and Informatics</b>
24	Undergraduate courses
34	Postgraduate courses
<b>40</b>	<b>Faculty of Health Studies</b>
40	Undergraduate courses
46	Postgraduate courses
<b>50</b>	<b>Faculty of Life Sciences</b>
50	Undergraduate courses
58	Postgraduate courses
<b>68</b>	<b>Faculty of Management, Law and Social Sciences</b>
68	Undergraduate courses
80	Postgraduate courses
<b>102</b>	<b>Getting to the University</b>
103	Getting here – by road, rail and air
104	Further information and contact details



## Speak to your local representative

The University of Bradford has regional teams around the world who can help you with all aspects in your decision to study in the UK, how to apply, scholarships and student life. They are happy to speak to you, and you might see them in events in your country, virtual and face to face. We also have a network of international agents who can assist you with your application. You can find your local contact by visiting [www.bradford.ac.uk/your-country](http://www.bradford.ac.uk/your-country)

## Online events

The University of Bradford hosts many online events throughout the year ranging from Open Days to subject specific webinars and pre-departure events.

Please visit the website for more information  
[www.bradford.ac.uk/webinars](http://www.bradford.ac.uk/webinars)  
[www.bradford.ac.uk/open-days](http://www.bradford.ac.uk/open-days)



# Welcome from the Vice-Chancellor

## A university education is life-changing, opening up opportunities that you just wouldn't have otherwise.

Choosing to study outside your home country is an exciting prospect and a big decision.

There are lots of reasons to study at the University of Bradford.

We are passionate about the student experience and supporting our students during their journey to be as successful as possible both here, and in future careers. All our students gain exposure to the world of work through placements, sandwich years, professional/industry accredited programmes and a curriculum designed and delivered in collaboration with industry experts.

We offer a range of services and networks for students including support for careers and employability, wellbeing, study abroad and volunteering opportunities, and social activities throughout the year. Our International Study Centre provides a friendly, supportive space for study, cross-cultural

interaction and free English language classes.

We care deeply about social inclusion and ensuring everyone has an equal opportunity to develop their potential. As the UK's named University of the Year for Social Inclusion in 2020, we have an outstanding track record of supporting students from diverse backgrounds to access graduate careers. We have excellent degree outcomes, with more than eight in every ten students graduating with a first or 2:1, and outstanding job prospects.

At the University of Bradford, we are transforming people's lives. Our research is cutting-edge and is setting agendas. 96% of our research and innovation is rated internationally significant. We influence policy and practice worldwide; our academics have a global profile and are in demand from the media to explain world

issues. For example, our research is contributing to the preservation and management of the world's heritage and our Applied Centre for Dementia is doing world-leading work to improve the lives of people with dementia.

Bradford is a welcoming and culturally rich place to study. We are one of the most diverse universities in the country. Our students and staff come from over 170 countries around the world. You will have a unique opportunity to meet and make friends with students, academics and researchers from all over the world.

Situated in the beautiful county of Yorkshire, the City of Bradford is multicultural, well-connected, and one of the UK's least expensive student cities. Our friendly and compact campus is within a five-minute walk of the city centre, with accommodation and all student facilities within the grounds.

Our team will support you at every step of your journey - from your first enquiry to securing your visa and arriving in Bradford, throughout your studies, and beyond graduation as a member of the Team Bradford alumni community.

This prospectus is designed to provide everything you need to know about studying at the University of Bradford. I hope you enjoy finding out for yourself what a fantastic experience it is to live and study here, and that we are able to welcome you to campus as a University of Bradford student.



**Professor Shirley Congdon**  
VICE-CHANCELLOR,  
UNIVERSITY OF BRADFORD

# This is education This is Bradford

A global village with over  
**130**  
different nationalities at the University

**1st**  
in England for impact on social mobility  
HIGHER EDUCATION POLICY INSTITUTE'S ENGLISH SOCIAL MOBILITY INDEX 2021

Awarded  
**Queen's Anniversary Prize**  
for Higher and Further Education



**96%**  
of research is world-leading, internationally excellent or internationally recognised  
RESEARCH EXCELLENCE FRAMEWORK (REF) 2014

One of an elite group of business schools across the world to have achieved  
**Triple-Crown accredited**  
EQUIS, AMBA & AACSB



The University of Bradford has over  
**50**  
years of innovation and excellence



**1st**  
in the UK for visa advice  
INTERNATIONAL STUDENT BAROMETER 2019

**TOP 5**  
in the UK for satisfaction with living and accommodation costs and value for money  
INTERNATIONAL STUDENT BAROMETER 2019



Our first chancellor,  
**Prime Minister Harold Wilson**



Formed in  
**1832**  
as the Mechanics Institute, in 1966 the University of Bradford became Britain's 40th university

# Your future

## At Bradford you get a real-world education.

### Careers and Employability

You will develop the skills employers need, as our courses are designed using input from our industry partners. You put theory into practice in the lab, in the field, and on placement. You'll graduate with the experience you need to launch your career.

You'll also have the support of our **Career and Employability Services** every step of the way:

- One-to-one impartial and confidential appointments for finding part-time work, graduate career planning, and support with applications and interviews for jobs and postgraduate study
- Workshops, including regular careers forums for international students
- Career fairs and networking events
- A database of global and UK job opportunities – for while you're studying and after graduation
- Internships and placement programmes
- Access to a range of interactive learning resources

### The Graduate Immigration Route

The Graduate Immigration Route is available to international students who have successfully completed a degree at undergraduate level or above at a Higher Education Provider and who have a valid Tier 4 or Student Route visa at the time of application.

Successful applicants on this route will be able to stay and work, or look for work, in the UK at any skill level for a maximum period of two years (or three years for PhD students). Graduates may be able to switch into skilled work once they have found a suitable job.

Further information is available on the Gov.UK website [www.gov.uk](http://www.gov.uk)

### Start-up Visa

If you are interested in starting a business and want to extend your stay in the UK after graduation, you can apply for the Start-up Visa scheme. Full details of the scheme can be found on the Gov.UK website [www.gov.uk/start-up-visa](http://www.gov.uk/start-up-visa)

As a University of Bradford student you will receive support from a team of business and social enterprise start-up experts, as well as mentoring from successful entrepreneurs. Email [open-innovation@bradford.ac.uk](mailto:open-innovation@bradford.ac.uk) for more details.

### This is your family for life

On your graduation day you join an alumni community of more than 144,000 people in 179 countries around the world.

We're here to support you for life. Here are a few of the benefits you'll have:

- Access to Career and Employability Services for five years
- An alumni discount on postgraduate study
- An international network of alumni groups
- Free lifetime membership of the Students' Union
- Ongoing access to library services
- Graduate and graduate internship programmes

For further information on Graduate Visa

[visasupport@bradford.ac.uk](mailto:visasupport@bradford.ac.uk)  
[www.gov.uk](http://www.gov.uk)

For further information on Start-up Visa scheme

[open-innovation@bradford.ac.uk](mailto:open-innovation@bradford.ac.uk)  
[www.gov.uk/start-up-visa](http://www.gov.uk/start-up-visa)

# 94%

**of graduates are in employment or further study within 6 months of graduation\***

# TOP 3

**in the UK for work experience and careers and employment services**

INTERNATIONAL STUDENT BAROMETER 2019

\* Source: Annually published data by the Higher Education Statistics Agency (HESA) 2017

# Spectacular surroundings, in the heart of the UK



Canal boat at Saltaire



Main Street, Howarth

**Bradford is one of the largest cities in the UK, with a population of over half a million people. The city is proud to be home to a diverse range of cultures, with over 120 different languages spoken across the city.**

It is a friendly, vibrant, creative place – and one of the least expensive student cities in the UK. You'll find an abundance of art, music and theatre on your doorstep, and discover fantastic nightlife at the city's wide variety of restaurants, venues and clubs. Bradford's rich Victorian heritage is evident across the city in its beautiful architecture.

# 3/4

**of the Bradford district is green space**

Our students live in the heart of the city. Our campus is a five-minute walk from Bradford City Park, a multi-award winning public space in the city centre. This outstanding development is host to regular events – and is a fantastic place to watch the world go by. It features a 4,000 square-metre mirror pool, spectacular laser light projections, and over 100 fountains.

The city is nestled amongst some of the most stunning and dramatic scenery in the UK, with miles and miles of unspoilt countryside to explore just a short trip away. It is also a great base for exploring the whole of the UK due to the excellent road and public transport links. There is an international airport nearby too, making it easy to get to Bradford from anywhere in the world.

## Did you know?

- Bradford is the first UNESCO City of Film, and is home to the National Science and Media Museum
- The city has been named Curry Capital of Britain for a record-breaking six years in a row
- There are more than 40 public parks across the city
- The city hosts a dazzling range of street events and international festivals
- Bradford was once the capital of the world's wool trade
- Around three-quarters of the Bradford district is green space
- The Yorkshire Dales, Peak District, Lake District and North Yorkshire Moors national parks are not far from the city region

# 40+

**public parks  
across the city**

Visit

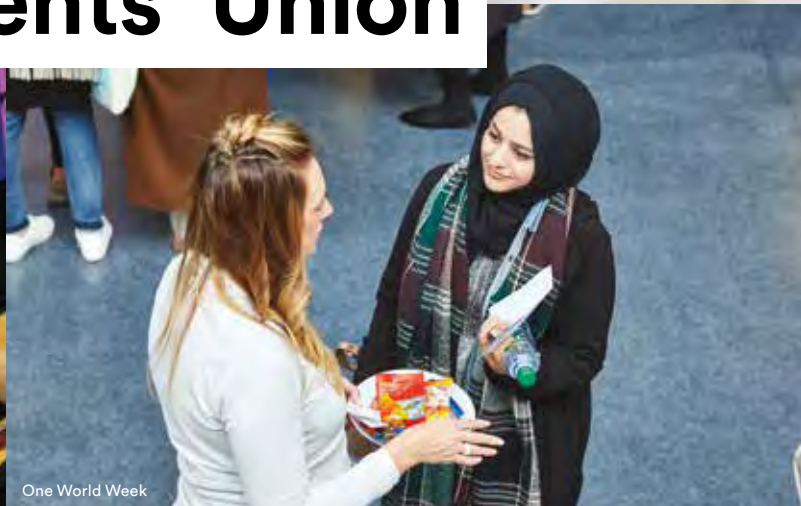
[www.bradford.ac.uk/discover](http://www.bradford.ac.uk/discover)  
[www.visitbradford.com](http://www.visitbradford.com)



# Your Students' Union



Live music in Student Central



One World Week

The University of Bradford Students' Union (UBU) help you get the most from your student life. Your elected student representatives – together with a dedicated team of Students' Union staff – are there to work directly for you.

Every University of Bradford student automatically becomes a member of the UBU. The organisation works to enrich your student experience.

#### They can help you:

- Get involved in sports, societies, media areas and community volunteering organisations to learn new skills, meet new people and work towards becoming a student leader
- Meet new friends, and discover entertainment and events - on and off campus. From food stalls to weekly live music, talent shows to self-defence classes

- Engage with politics, and connect with like-minded peers
- Access academic or personal advice and support
- Become a student or faculty representative and help improve the quality of your course by speaking to students and raising their issues

For more information on our Students' Union, visit [www.bradfordunisu.co.uk](http://www.bradfordunisu.co.uk)

The UBU is based in the £8m Student Central, a state-of-the-art facility at the heart of our Campus. From here you can get involved with over 100 clubs and societies, and access all the UBU support services.

#### Student Central is also home to:

- RamAir, our University radio station
- Bradford Student Cinema
- The Bradford Student Newspaper
- Bradford Student Productions
- A Union shop
- Bars and entertainment venues, including a wide variety of alcohol-free social activities

# £8m

dedicated Student Central building

#### Support, advice and representation

Whether you need help with academic, financial, welfare or immigration issues, the UBU Advice Centre is there for you all year round. You can confidentially discuss any issue with the Centre's trained advisers, who will help you to access any support you need.

We believe that student representation is vital to the student experience. Our student representation system allows your voice to be heard, and makes a real impact on University policies. The system is made up of hundreds of student volunteers, who represent other students within their programme of study and work to raise student issues and bring about positive change on campus.





# This is Team Bradford

**Our students take great pride in the welcoming, vibrant and inclusive community on campus – a community called Team Bradford.**

**Team Bradford is the heartbeat of the student community, representing all our sports clubs, societies, media areas and volunteers. It is the student platform which champions all student successes, achievements and campaigns. When you arrive in Bradford you will become a part of this unique community and ethos.**

There are over 100 sports clubs and societies for you to join, all run by students for students. You can even create your own if you and your friends have a great idea.

# 100+

**sports and societies to take part in**

## Sport

Whether you want to take up a sport for fun, fitness, serious competition or simply try something new, the wide range of sports on offer means there's something for everyone. Sport, and the social side that goes with it, is an integral part of campus life here at Bradford.

Athletic Union Membership allows you to join any of our sport clubs — from American Football to Water Polo — with weekly training and matches against other universities as well as intramural, varsity and colours competitions.

Our sports facilities are fantastic, and include the on-campus Unique Fitness Centre and the Laisteridge Lane Sports Park which has just completed a £500k programme of renovation and improvement.

For a full list of sports, visit [www.bradfordunisu.co.uk/get-involved/sports](http://www.bradfordunisu.co.uk/get-involved/sports)

## Clubs, societies and volunteering

Our campus is a hive of activity. You can choose to join over 70 active societies, and there really is something for everyone. From politics and religion to yoga and street dance, you'll discover new passions, learn new skills, and meet like-minded people.

**Clubs and societies are loosely grouped around five categories:**

- Activities
- Departmental
- Campaigns
- Religious
- International

Find out everything on offer at [www.bradfordunisu.co.uk/activities](http://www.bradfordunisu.co.uk/activities)

There are also plenty of opportunities to get involved in volunteer work, and contribute to local community projects. Our UBU Volunteering office can help you find the perfect project to fit your schedule, enabling you to make a real difference to people's lives.

## Recognising your contribution

The University of Bradford provides students with a Higher Education Achievement Report (HEAR). It's a new kind of transcript, helping you show employers the full story of your studies and skill development. Your extra-curricular activities, achievements, university activities and roles are recorded alongside grades.

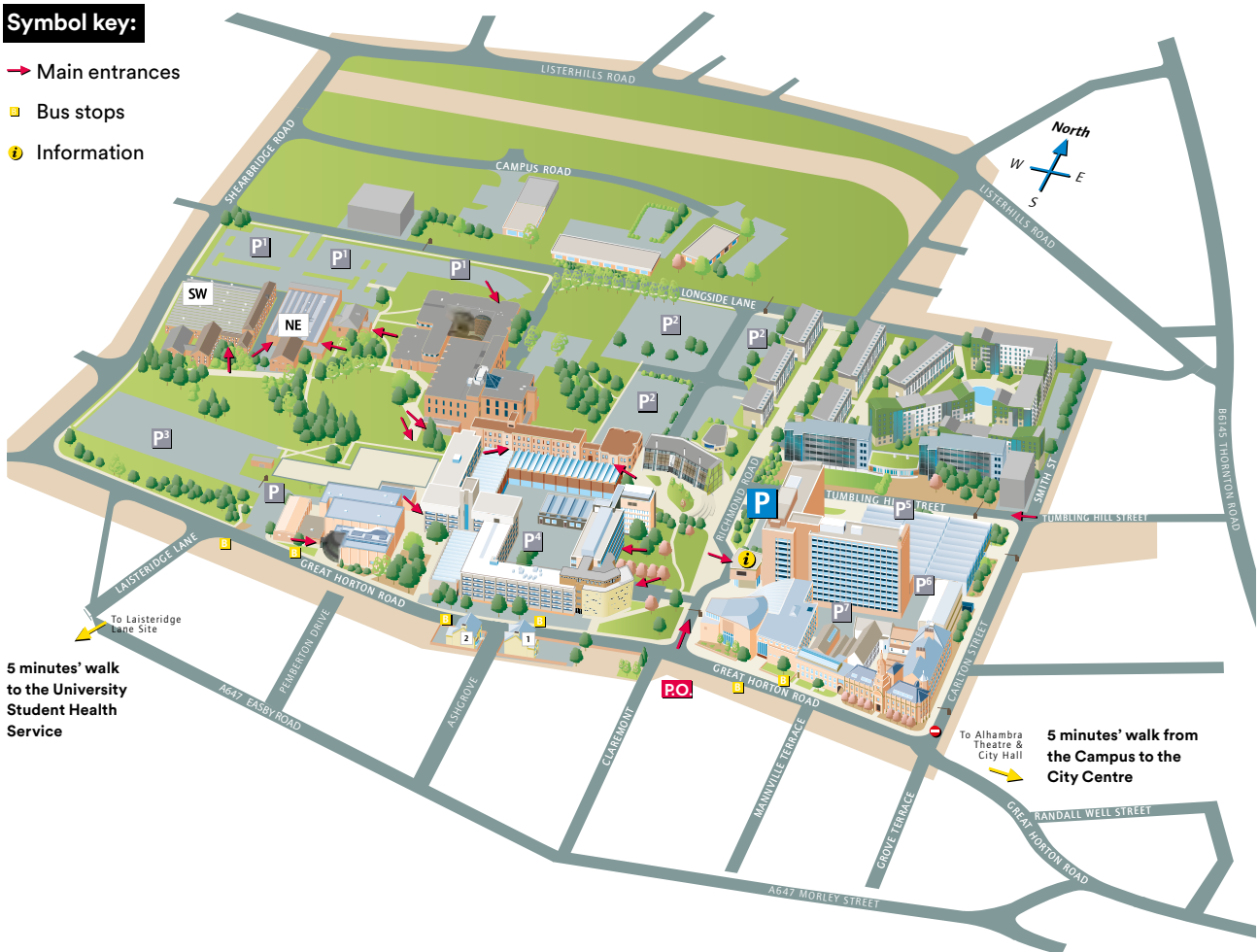
This means your contribution to Team Bradford not only gives you fantastic experiences – it benefits your employability upon graduation.

# The University of Bradford campus

An oasis in the heart of the city.

## Symbol key:

- Main entrances
- Bus stops
- ⓘ Information



Sat Nav Postcode  
**BD7 1AZ**



# Student services and support

**Our award-winning support services will help you to achieve your full potential – both academically and personally.**

**We provide all you need to progress through your studies and on into the world of graduate work.**

## **Outstanding support for international students**

We go the extra mile for our international students – right from the time our student ambassadors greet you at the airport upon your arrival.

The Language Centre is here to support you throughout your studies with expert tuition in academic English language skills through free workshops, one-to-ones and online helpdesks and resources. Choose which courses you want to study, for example grammar, pronunciation, academic vocabulary, reading and writing. For more information, visit [www.bradford.ac.uk/language-centre](http://www.bradford.ac.uk/language-centre)

The UBU International Student Centre (Room 101) is a friendly space for study, cross-cultural interaction and student-led foreign language learning. They also organise lots of cultural events, day trips around the UK and even sporting events such as cycling and hiking.

## **Pastoral care, counselling and advice**

When you begin studying with us you'll be allocated a Personal Academic Tutor, who will be happy to discuss any area of your programme of study. If you're living in a halls of residence, there's always a warden on hand to answer any queries or concerns, day or night. Our International Student Adviser is also here to help you when you arrive and throughout your stay.

Confidential free advice and counselling is available through our Students' Union and the team of friendly, qualified counsellors. All our counselling and advice services are confidential and free of charge. For more information, visit [www.bradford.ac.uk/counselling](http://www.bradford.ac.uk/counselling)

## **Access to the services you need**

**We provide a comprehensive range of facilities and services, including:**

- An on-site nursery, offering excellent child care
- Our own health centre, the Bradford Student Health Service
- Religious counsellors and a dedicated prayer space
- A Disability Service
- An Eye Clinic, providing eye examinations at a reduced rate
- A student-led Physiotherapy Clinic

## **Study support and careers**

The Academic Skills Advice Service is open to all students, and will work with you to develop your academic, interpersonal and transferable skills.

We have well-stocked libraries and excellent IT facilities across campus. These facilities are open 24 hours a day during term time, meaning you'll always find a place to get things done on campus.

Our Career and Employability Services can help you develop your employability skills through regular workshops and interactive learning resources. Our friendly staff will also help you find local part-time work during your studies.

Our support doesn't end once you graduate – our Alumni Office maintains contact with tens of thousands of graduates, organising reunions, networking opportunities and developing overseas branches. You'll be a lifelong member of the University of Bradford community.

For further information on student services

[www.bradford.ac.uk/student-life/support/](http://www.bradford.ac.uk/student-life/support/)

# 1st

**in the UK for visa advice**

INTERNATIONAL STUDENT BAROMETER 2019

# Accommodation

The place you live is a huge part of your student experience. That's why we've invested over £40m in the award-winning, eco-friendly student village on campus – The Green.

The Green is the centre of student life here at Bradford. It is the accommodation recommended by the University of Bradford to our students.

The Green is a sociable, secure, home-from-home – and one of the most sustainable developments of its kind in the world. It's just a short walk from the city centre, so you're close to everything you need. The Green has a welcoming community atmosphere, perfect if you're living away from home for the first time.

## Safe and secure

- Staffed 24 hours a day
- A team of wardens live on-site, providing advice and support
- A security team look after the site from 19:00pm – 7:00am, Monday to Friday, and throughout the weekend
- The Accommodation and Management Office, located at the heart of The Green, are on hand to deal with any general queries or issues

## A great social life

- The Green Ambassadors, a team of students who work to make your time at The Green unforgettable, run a full programme of events, trips and competitions
- The Green Village, and Townhouses at the Green are designed to encourage sociable living, with open plan communal spaces built and equipped to the highest specifications
- A biodiversity pond water feature, surrounded by barbecue sets, seating and grassed areas, is a hub of social activity at the heart of The Green

## High quality accommodation

The Green is the first student residential project in the country to achieve the BREEAM accolade of 'outstanding', due to its innovative sustainable design features. Set in beautifully landscaped gardens, The Green provides plenty of places to relax and socialise.

It is made up of The Green Village and Townhouses, with 1,026 bedrooms designed around a village concept. Both accommodation types feature bright, modern and fully-equipped kitchen and living spaces. In townhouses, bathrooms are shared by two bedrooms, while The Green Village has en-suite bathrooms.

At the heart of The Green is The Orchard, the central hub building, where you will find the Accommodation and Management Office, as well as that all-important laundrette.

For full details, visit

[www.bradford.ac.uk/accommodation](http://www.bradford.ac.uk/accommodation)

## Private accommodation

Privately rented accommodation in Bradford is relatively inexpensive compared to most university towns and cities in the UK. Weekly rents in the city can range from £50 to £130 or higher, excluding bills.

We work closely with Unipol Student Homes to ensure our students find the best housing they can, and that private accommodation is of a good standard, measuring and checking standards through the robust Unipol accreditation schemes.

# 3rd

in the UK for satisfaction with accommodation cost

INTERNATIONAL STUDENT BAROMETER 2019

Guaranteed accommodation in University approved residence

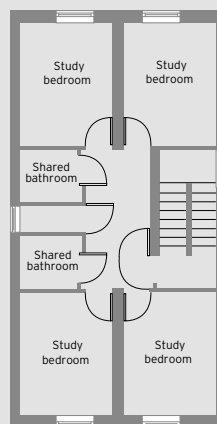
# This is home from home

The on-campus student village, The Green

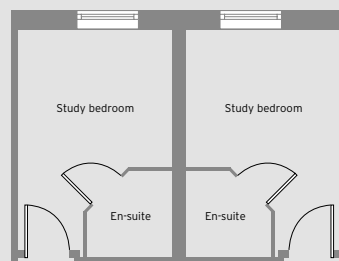
Take a tour of The Green online or in virtual reality

[www.bradford.ac.uk/virtual-experience](http://www.bradford.ac.uk/virtual-experience)

## Townhouse



## The Green Village



**Prices in 2021/22 from:**

**Townhouse £75 per week**

**The Green Village £85 per week**

Find out more:

Accommodation team

[accommodation@bradford.ac.uk](mailto:accommodation@bradford.ac.uk)

+44 1274 234883

[www.bradford.ac.uk/accommodation](http://www.bradford.ac.uk/accommodation)

Unipol

[info@unipol.bradford.ac.uk](mailto:info@unipol.bradford.ac.uk)

+44 1274 235899

[www.unipol.org.uk](http://www.unipol.org.uk)



# Broaden your horizons: stand out and go abroad

## Funding for opportunities abroad: study, work and short programmes

Studying or working abroad during your degree is a great way to develop skills employers value highly: independence, self-reliance, adaptability, open-mindedness, persistence, and intercultural awareness. A study or work placement abroad strengthens leadership, problem-solving and communication skills. Students who gain international experience during their degree are more likely to:

- Gain a 1st or 2:1 degree
- Be employed in a 'graduate' job 6 months after graduation
- Earn more

According to UUK, employers are looking for graduates with international cultural awareness and language skills. Studying or working abroad as part of your degree will make you stand out of the crowd. At the University of Bradford, we encourage all students to take part in a variety of different international opportunities, from Erasmus+ Study and Work Placements, to

the International Student Exchange Programme, to summer placements and short international programmes.

### We have five different funding options for gaining international experience during your studies:

1. **Erasmus+** – work or study opportunities within in the EU and selected partner universities outside the EU including Jordan and Egypt
2. **Overseas Placements** – work placements outside the EU such as India or the USA
3. **World Wide Exchange** – study placements at partner universities outside the EU such as the USA and Australia
4. **International Student Exchange Programme (ISEP)** – study placements at over 350 partner universities including 100 universities in the USA

5. **Short Term Travel Awards** – funding for short international programmes such as an Elective placement or a summer school lasting between 1 and 7 weeks

We are keen to explore with you the options and funding that we have available. Please contact the International Opportunities Team or visit our website: [www.bradford.ac.uk/exchanges](http://www.bradford.ac.uk/exchanges)

**“I really got out of my comfort zone during the year I spent in the USA and I have learnt a lot about a different culture that wouldn’t have been available to me in Bradford.”**

Zeeshan Javed, BSc Forensic and Medical Sciences, ISEP study abroad at University of Northern Colorado, United States

Thanks to generous university grants:

# 83%

of our students who go abroad are from widening participation backgrounds

We have over

# 400

partner universities in countries around the world

# The application process

Making an application to study at Bradford is easy. There are two ways to apply:

## Apply through a University representative or local office

The University of Bradford has regional teams and an extensive network of official representatives across the globe, who can guide you professionally through the application process.

They work with you, helping you to understand and meet the requirements for moving to the UK to study, and will contact the University on your behalf.

For a full list of contacts and representatives in your area please see our website: [www.bradford.ac.uk/your-country](http://www.bradford.ac.uk/your-country)

## Apply direct

### To apply for an undergraduate programme:

- All direct undergraduate applications must be submitted online via the Universities and Colleges Admissions Service (UCAS)
- Full instructions for International and EU students can be found on the UCAS website [www.ucas.com](http://www.ucas.com)
- The UCAS code for the University of Bradford is: **BRADF B56**

Further information can be found at [www.bradford.ac.uk/undergraduate/apply](http://www.bradford.ac.uk/undergraduate/apply)

### To apply for a postgraduate taught programme:

- You can apply online through our website - [www.bradford.ac.uk/postgraduate/taught-degrees/apply/](http://www.bradford.ac.uk/postgraduate/taught-degrees/apply/)
- You will be instructed to upload copies of your qualifications online
- Most of our postgraduate taught courses start in September each year, but there are some courses starting throughout the year

### To apply for postgraduate research:

- You will need to write a detailed research proposal, setting out the subject your research will address
- Typical periods of registration for full-time research are 15 months (minimum 12) for an MPhil, and three years for a PhD
- Most of our research students start in September, but it may be possible to start in January, April or July

Further information on making an online application, available research projects and funding can be found at [www.bradford.ac.uk/postgraduate/research-degrees/](http://www.bradford.ac.uk/postgraduate/research-degrees/)

## Undergraduate entry tariff

Undergraduate entry requirements given on course pages in this Prospectus are expressed as UCAS tariff points. You can see how many points your qualification has by checking the international web pages: [www.bradford.ac.uk/your-country](http://www.bradford.ac.uk/your-country)

UCAS have a tariff calculator which gives details for A levels, International Baccalaureate (IBO) and some other qualifications: [www.ucas.com/tariff-calculator](http://www.ucas.com/tariff-calculator)

## Your offer, and your arrival

Once our Admissions teams have considered and approved your application, you will be sent an offer to study at the University of Bradford. This will contain detailed information of what you need to do to accept your place.

After you accept your offer, the University will contact you with arrival and orientation information to ensure your move to Bradford goes smoothly. If you require a visa to study in the UK, the Visa Support Team will be on hand to answer any of your questions.

**It is important to apply for your course as early as possible**, so that you can plan your acceptance and travel to arrive in good time for orientation. You can start applying for a degree a year before the start date.



# English language requirements and pathways to study

**Having a good command of the English language is essential to truly benefit from your studies in the UK.**

## Requirements to study at Bradford

If your first language is not English, you need to reach a level of English approved by the University before you can be admitted onto any of our undergraduate or postgraduate courses.

The British Council inspected and accredited the University of Bradford (The Language Centre) in February 2017. Strengths were noted in the areas of quality assurance, learning resources, academic staff profile, course design, teaching, care of students, accommodation, and leisure opportunities.

Accredited by the  
 **BRITISH COUNCIL**  
 for the teaching  
 of English in the UK

# 97%

**satisfaction with international student support**

INTERNATIONAL STUDENT BAROMETER 2019

**There are three pathways available to you:**

## Direct entry to a degree programme

Having achieved the required level on an approved English language test such as IELTS, TOEFL or Pearson Test of English. The University also has its own test, the Bradford Academic Skills and Language Test (BASALT), allowing direct entry to degree programmes and for entry to pre-sessional programmes for students not on a Tier 4 visa. For further information visit: [www.bradford.ac.uk/language-centre/language-test](http://www.bradford.ac.uk/language-centre/language-test)

In addition to this, some English language qualifications from overseas secondary schools may be accepted.

Check our website for a full list of approved English tests:  
[www.bradford.ac.uk/international/entry-requirements](http://www.bradford.ac.uk/international/entry-requirements)

## A Pre-sessional English Language Programme (PREP)

This leads to direct entry onto a degree programme for students with:

- the required level of English, and who would like to improve their English and academic skills
- 0.5 – 2.0 IELTS points below the English language requirement for their chosen course of study

Pre-sessional English programmes prepare international students for life and study at a British university, and provide an effective and enjoyable way for students to improve their English language and academic study skills.

The classes are structured to suit the academic teaching styles and kinds of learning projects that you will encounter during your studies at the University of Bradford.

## An International Foundation Year

This leads to direct entry onto a degree programme for those with up to 1.0 IELTS points below the English requirement, and/or school leaving qualifications that are below the requirements for the degree you wish to study. These courses provide tuition in the subject areas you need, alongside tuition in the English and academic skills that will help you succeed in your academic studies. For further details of the International Foundation Year programmes available via the University of Bradford International College, please see pages 20 - 22.

**NCUK**  
 THE UNIVERSITY CONSORTIUM

We are a founder member of NCUK, who offer pathway programmes at over 80 delivery centres across the world.

Students who pass an NCUK programme are guaranteed a place at one of the 16 members of the consortium, including Bradford.

To find out more, visit [www.ncuk.ac.uk](http://www.ncuk.ac.uk)



# This is confidence building

**"I chose Bradford because I knew it would give me the best opportunities to achieve my career goals. I'm focused on getting the most successful career after university, that was what sealed my decision to come to Bradford."**

Ahmed Malik, from Pakistan  
MSc Cyber Security & BEng Software Engineering



# Scholarships and living costs

## Scholarships

### University scholarships

We invest £4m in scholarships each year. Awards are given on the basis of academic excellence, and to enable students from developing countries to study at Bradford.

To search for scholarships you may qualify for, details on how to apply, and scholarship criteria, visit [www.bradford.ac.uk/scholarships](http://www.bradford.ac.uk/scholarships). Not all scholarships require an additional application, and are applied automatically.

### Other scholarships and funding

The British Council can advise on sources of financial support for international students. Many scholarships only cover postgraduate degrees; others cover course fees for specific subjects, while some are only available for specific institutions.

Visit [www.educationuk.org](http://www.educationuk.org) for further information.

## Living costs

When you're planning your budget for UK study, it's not just the course fees that you need to think about. You need money for accommodation, utility bills, council tax, food, books, equipment and, of course, a social life.

For visa purposes, as a new student to the UK, you will need to show that you have **£1,023 per month for the first nine months** of your course to use for your living costs, in addition to your tuition fees for the first year of your course.

### Bradford – an affordable city

Bradford is one of the least expensive cities in the UK, which means groceries, rent and other expenses are likely to be cheaper. We have given a few examples of typical costs below; just remember these don't include any leisure activities, clothing, subscriptions to services (like Netflix) or membership of sports teams or societies:



### TYPICAL LIVING COSTS (2021-22)

ESTIMATED MINIMUM LIVING COSTS IN BRADFORD 2021/2022	42 WEEKS	51 WEEKS
Accommodation depending on type*	£3,780 – £6,910	£4,335 – £8,305
Food (based on £60 per week)	£2,520	£3,060
Toiletries, laundry and household (based on £15 per week)	£630	£765
Books, stationery, photocopying and printing (based on £10 per week)	£420	£510
Mobile phone costs (based on £10 per week)	£420	£510
Local travel – if required (based on £15 per week)	£630	£765
Set up costs	£500	£500
Insurance for personal possessions**	£70	£70
<b>ESTIMATED TOTAL</b>	<b>£8,970 – £12,100</b>	<b>£10,515 – £14,485</b>

### Affordable living

# TOP 5

in the UK for satisfaction with living and accommodation costs and value for money

INTERNATIONAL STUDENT BAROMETER 2019

\* Accommodation may be in Halls of Residence (standard rooms or en-suite rooms available) or in private housing. Halls of Residence rents usually include all utility bills. Rent in private housing is generally for room only, and costs of utility bills are additional. Please check with your accommodation provider for further details.

\*\* Insurance for personal possessions is included in rent at The Green, our on-campus halls of residence. Rent in private houses does not include this insurance, and this cost should be included in your budget planning.

# Tuition fees

Higher education is one of the greatest investments you will ever make. The knowledge and skills that you graduate with will open doors to a more prosperous future.

The quality of our teaching is high, as is the international status of our qualifications.

Scholarships can offset the cost of your tuition fees:

[www.bradford.ac.uk/scholarships](http://www.bradford.ac.uk/scholarships)

## SUMMARY OF ANNUAL TUITION FEES – 2022/23 ENTRY\*

### UNDERGRADUATE PROGRAMMES

INTERNATIONAL STUDENTS	COST
Engineering/science programmes	£21,124
Management/social science programmes	£17,740

### POSTGRADUATE PROGRAMMES

INTERNATIONAL STUDENTS	COST
MA, MSc, LLM and MBA programmes	
Engineering/science programmes	£21,930
Social science programmes, and LLM	£18,566
Standard management MSc programmes	£18,566
Executive MBA (Bradford or Dubai)	£23,744
MBA Distance Learning (and MBA Circular Economy)	£19,222

\* For full information, including fees for European students, placement years, certain programmes in the Faculties of Health Studies, Life Sciences, Management, Law & Social Sciences, research programmes, Dubai-based programmes and alternative postgraduate qualifications, please visit [www.bradford.ac.uk/money/fees](http://www.bradford.ac.uk/money/fees)

For information on tuition fees for foundation courses and pathways please see the University of Bradford International College web pages: [www.bradford.ac.uk/international/international-college/](http://www.bradford.ac.uk/international/international-college/)

This information is correct at time of publication, but may be subject to change. Please consult the University of Bradford website for up-to-date information.



# Research degrees



**The University of Bradford is a technology university with over 50 years' of cutting-edge research experience. Our research is ranked in the top 50 in the UK (HEFCE, 2014) for research quality with three-quarters being classed as either world-leading or internationally excellent.**

We offer a range of postgraduate research degrees for international students. We harness technology for the good of society through our three overarching research themes. We welcome postgraduate research applications related to these themes:

- Advanced Healthcare
- Innovative Engineering
- Sustainable Societies

### Supporting our research students

Our research students benefit from outstanding support services, including: a comprehensive induction; personalised, flexible training opportunities; highly qualified, dedicated supervisory teams; state-of-the-art equipment and learning facilities; an International Study Centre and

a Language Centre; and regular shared learning activities with peers, encouraging interdisciplinary conversations.

We also offer a dedicated space for research students: the PGR Lounge. The area provides group study facilities, bookable meeting spaces, quiet study areas and social spaces – the perfect environment to collaborate and network with peers.

For details of scholarships and tuition fees, see pages 16 to 17.

Find a research degree

[www.bradford.ac.uk/postgraduate/research-degrees/](http://www.bradford.ac.uk/postgraduate/research-degrees/)

Postgraduate Research Lounge, a dedicated space for research students providing group study facilities, bookable meeting spaces, quiet study areas and social spaces. Take a 360-degree tour online

[www.bradford.ac.uk/virtual-experience](http://www.bradford.ac.uk/virtual-experience)



# Research strengths by faculty

## The Faculty of Engineering and Informatics

We deliver impact and economic benefits to people worldwide, developing and implementing innovative engineering and manufacturing technologies.

We have over 180 PhD researchers from around the world, many funded by research institutions and companies in the UK and internationally.

### Our research themes include:

- Advanced Materials
- Applied Computing
- Automotive Systems Engineering and Automotive Product Development
- Chemical and Process Engineering
- Communications and Networks
- Computing, Visualisation and Imaging
- Manufacturing Systems and Supply Chains
- Medical Engineering and Healthcare Technologies
- Modelling, Simulation and Optimisation of Complex Systems
- Sustainable Environments
- Theory of Computation

## The Faculty of Health Studies

We have a vibrant community of research students originating from across the world. Many are qualified health professionals, and include doctors, nurses, midwives, physiotherapists, radiographers and occupational therapists.

Our research is internationally significant, undertaken in collaboration with the National Health Service and other partners. We are home to an Alzheimer's Society-funded Doctoral Training Centre, training the next generation of dementia research leaders.

We welcome applications that fit into our research centres, which house our professors and multidisciplinary teams of researchers and

### PhD students:

- Living Well with Dementia
- Inclusion and Diversity
- Management
- Quality and Safety
- End-of-life Care
- Health Inequalities (including Public Health)
- Health Technologies

## The Faculty of Life Sciences

We are home to a community of over 100 research students, supported by a mixture of Research Council studentships, health charities, industrial partnerships, government sponsorship and internal scholarships.

Research students have access to cutting-edge facilities, dedicated to fundamental and applied research.

Our joint Allied Health submission with the Faculty of Health Studies, for the 2014 Research Excellence Framework, classified 92% of our research as world-leading or internationally excellent.

### We have an international reputation in:

- Cancer Therapeutics
- Skin and Hair Follicle Research
- Materials Chemistry
- Medicines Development and Pharmaceutical Sciences
- Archaeological Sciences
- Vision Science

## The Faculty of Management, Law and Social Sciences

We undertake world-leading research addressing management and organisational issues. All students have access to Faculty research facilities, seminars and networking opportunities.

We offer a dedicated research hub, shared by staff and students.

### We offer PhD degrees in a range of subject areas, including:

- Economics
- Accounting and Finance
- Human Resource Management and Organisational Behaviour
- International Business and Entrepreneurship
- Marketing
- Law
- Peace Studies and International Development
- Psychology
- Sociology and Criminology
- Social Work and Social Care
- Critical Perspectives in Identity and Diversity
- Wellbeing, Food and Health
- Parenting and Caring
- Class, Ethnicity and Social Cohesion

We also offer the Bradford Doctor of Business Administration (DBA) for senior managers, bringing together academic theories and concepts with business and management practices.

## University of Bradford International College offers pathway programmes for international students to prepare them for undergraduate and postgraduate studies in the UK.

We are an embedded college located on the main city campus at the University of Bradford. Our pathway programmes are designed to prepare you for your future university studies at the University of Bradford. It will improve your academic and English language skills to the level required to progress directly onto your chosen degree course.

Part of the City Campus, which is compact, self-contained, and located just minutes from the city centre, the college is ideally located to give you a university student experience from day one. Here you will be given the support and care that you need to adjust and succeed in your new life as a university student in the UK.

The college is a partnership between the University of Bradford and Oxford International Education Group, a private education provider that has been delivering outstanding education for students from across the globe for 30 years.

### Course benefits

- Undergraduate and postgraduate degree options
- Full university student status from day one, with access to university facilities and services
- Direct continuation to chosen degree upon successful completion of the first stage/s
- English language support available throughout the entire programme
- One visa for the entire course duration
- Opportunity to live on-campus with UK and international students

### What can you study?

Our pathway programmes offer you various routes to a degree depending on your level of study, English language ability and subject area.

For further information visit [www.bradford.ac.uk/international/international-college](http://www.bradford.ac.uk/international/international-college)



## UNDERGRADUATE

# International Foundation Year [IFY]

The IFY is a level 3 foundation year that is an equivalent qualification to A levels. During your programme you will develop subject-specific knowledge with a strong focus on improving your academic English language skills in preparation for studying at university. You will study this course for one year and after successful completion receive a level 3 award and can then progress to year one of your chosen university degree course.

## The following pathways are offered:

- Business and Management
- Computing and Creative Industries
- Law and Social Sciences
- Science, Engineering and Health

## Entry requirements

We accept students worldwide. For a short list of region-specific academic entry requirements, please see our website under international study. You will also have to meet the English language requirements. These requirements are indicative only and subject to change.

If your region is not listed on the website, please contact our Admissions team at [ubic@oxfordinternational.com](mailto:ubic@oxfordinternational.com) who would be happy to provide you with further information.

Minimum IELTS 4.5 (with no skill below 4.0).

Start date for this course is September.

Current modules 2021/22.  
Programmes are reviewed annually.

CORE MODULES	CREDITS
General English Skills (IFY students at IELTS between 4.5 and 5.0)	0
Digital Literacy	10
Foundation Mathematics	10
English for Academic Purposes	10
Academic Literacy and Practice	10
English for Specific Purposes	10
Advanced Academic Study Skills	10
Introduction to Research Methods	10

Depending on your chosen pathway and the number of terms you are studying, you will study a variety of subject-specific modules designed to prepare you for your degree course. Please see the website for these options.

## UNDERGRADUATE

# The International Year Zero [IYZ]

The IYZ is the first year of a four-year integrated degree course. Your first year is taught at the college where you will gain extra skills in your subject area, as well as English Language, before you continue to year one of your chosen undergraduate degree course.

## The following pathways are offered:

- Business and Management
- Computing and Creative Industries
- Law and Social Sciences
- Science, Engineering and Health

## Entry requirements

We accept students worldwide. For a short list of region-specific academic entry requirements, please see our website under international study. You will also have to meet the English language requirements. These requirements are indicative only and subject to change.

If your region is not listed on the website, please contact our Admissions team at [ubic@oxfordinternational.com](mailto:ubic@oxfordinternational.com) who would be happy to provide you with further information.

Minimum IELTS 5.5 (with no skill below 5.5).

Start date for this course is September.

Current modules 2021/22.  
Programmes are reviewed annually.

CORE MODULES	CREDITS
Digital Literacy	10
Foundation Mathematics	10
English for Academic Purposes	10
Academic Literacy and Practice	10
English for Specific Purposes	10
Advanced Academic Study Skills	10
Introduction to Research Methods	10

Depending on your chosen pathway and the number of terms you are studying, you will study a variety of subject-specific modules designed to prepare you for your degree course. Please see the website for these options.

## UNDERGRADUATE

# The International Year One [IY1]

The International Year One (IY1) provides an intensive combination of first year university subject modules with extra study and English language skills. The IY1 is the equivalent to your first year of study at undergraduate level, upon successful completion, you will continue to the second year of your chosen degree at study at University of Bradford.

## The following pathways are offered:

- Business
- Computing
- Engineering

## Entry requirements

We accept students worldwide. For a short list of region-specific academic entry requirements, please see our website under international study. You will also have to meet the English language requirements. These requirements are indicative only and subject to change.

If your region is not listed on the website, please contact our Admissions team at [ubic@oxfordinternational.com](mailto:ubic@oxfordinternational.com) who would be happy to provide you with further information.

Minimum IELTS 5.5 (with no skill below 5.5).

Start date for this course is September.

Current modules 2021/22.  
Programmes are reviewed annually.

CORE MODULES	CREDITS
English for Academic Purposes	20
Professional and Academic Practice	10

Depending on your chosen pathway and the number of terms you are studying, you will study a variety of subject-specific modules designed to prepare you for your degree course. Please see the website for these options.

## UNDERGRADUATE

# International Incorporated Master's [IIM]

The IIM is offered over one or two terms and focuses on equipping you with the academic English language skills you need to complete your postgraduate study at the University of Bradford.

It is designed for students who do not qualify for direct entry to the master's programmes at the university, this could be because of the grades achieved in your bachelor degree; your current qualifications are not equivalent to a UK bachelor degree or because you have a different background.

After successfully completing the IIM you will continue onto your chosen postgraduate degree course at the University of Bradford.

- One term IIM 15 months (IELTS 6.0 or equivalent (with no skill below 5.5))
- Two term IIM 18 months (IELTS 5.5 or equivalent (with no skill below 5.5))

## The following pathways are offered:

- Management, Law and Social Sciences
- Science, Engineering and Health

## Entry requirements

We accept students worldwide. For a short list of region-specific academic entry requirements, please see our website under international study. You will also have to meet the English language requirements. These requirements are indicative only and subject to change.

If your region is not listed on the website, please contact our Admissions team at [ubic@oxfordinternational.com](mailto:ubic@oxfordinternational.com) who would be happy to provide you with further information.

This course has multiple start dates throughout the year, dependent on your English language and academic qualifications.

Current modules 2021/22.  
Programmes are reviewed annually.

CORE MODULES	CREDITS	ONE TERM	TWO TERM
English for Master's Preparation 1	10	X	X
Project Management Methodologies	10	X	X
Research Methods	10	X	X
English for Master's Preparation 2	10		X
Preparing for Postgraduate Study in the UK	10		X
Postgraduate Progression Project	20		X

Depending on your chosen pathway and the number of terms you are studying, you will study a variety of subject-specific modules designed to prepare you for your degree course. Please see the website for these options.





UNDERGRADUATE

# Chemical Engineering



IChemE  
Institute of Chemical Engineers



KIMO  
www.kimo.fr

**Benefit from an education stressing engineering fundamentals set in the context of Conceiving - Designing - Implementing - Operating (CDIO) real-world systems.**

## Entry requirements

A levels: BEng and MEng: **112 UCAS points - BBC** to include A level Maths and Chemistry minimum grade C, plus a minimum of GCSE English Language and Maths at grade C or 4 (equivalents accepted).

Minimum IELTS 6.0 or equivalent.

**C** = Core module  
**O** = Option module

Start date for all these courses is September.

Current modules 2021/22.  
Programmes are reviewed annually.

DEGREE	BEng (Hons)	MEng
UCAS CODE	H8D0 3yr FT H810 4yr SW	H8X0 4yr FT H8C0 5yr SW
<b>FIRST-YEAR MODULES</b>		
Design, Build and Test	C	C
Mathematical Methods and Applications	C	C
Engineering Materials	C	C
Electronics and Mechanics	C	C
Computer Aided Engineering	C	C
Thermofluids	C	C
<b>SECOND-YEAR MODULES</b>		
Further Mathematics and Statistics	C	C
Mass Transfer Operations	C	C
Reaction Engineering	C	C
Chemistry for Engineers	C	C
Transport Processes	C	C
Engineering and Chemical Thermodynamics	C	C
<b>THIRD-YEAR MODULES (Final year of BEng)</b>		
Chemical Engineering Design Project	C	C
Control Engineering	C	C
Process Design	C	C
Reliability and Safety Engineering	C	C
Sustainable Energy	O	O
Project Management and Six Sigma	O	O
Petroleum Engineering	O	O
<b>FINAL-YEAR MEng MODULES</b>		
Advanced MEng Research Project		C
Desalination Technology		C
Transport Phenomena		C
Upstream Production and Refinery Operations		C
Food and Pharmaceutical Processes Engineering		O
Polymer and Materials Engineering		O
Water and Waste Water Treatment		O
Risk Assessment and Management		O
Oil and Gas Management		O

UNDERGRADUATE

# Civil and Structural Engineering

**ice**  
Institution of Civil Engineers

The Institution  
of Structural  
Engineers

Benefit from the Royal Academy of Engineering Visiting Professor from ARUP who teaches Structural Engineering in Practice.

7th in the UK for Civil Engineering (Guardian University League Table 2021).

## Entry requirements

A levels: BEng and MEng: **112 UCAS points - BBC** to include A level Maths minimum grade C, plus a minimum of GCSE English Language and Maths at grade C or 4 (equivalents accepted).

Minimum IELTS 6.0 or equivalent.

C = Core module  
O = Option module

Start date for all these courses is September.

Current modules 2020/21.  
Programmes are reviewed annually.

DEGREE	BEng (Hons)	MEng
UCAS CODE	H220 3yr FT H221 4yr SW	H290 4yr FT H291 5yr SW
<b>FIRST-YEAR MODULES</b>		
Design, Build and Test (Civil and Structural Engineering)	C	C
Mathematical Methods and Applications	C	C
Electronics and Mechanics	C	C
Engineering Materials	C	C
Computer Aided Engineering	C	C
Thermofluids	C	C
<b>SECOND-YEAR MODULES</b>		
Further Mathematics and Statistics	C	C
Design of Steel and Concrete Structures	C	C
Water Engineering	C	C
Soil Mechanics	C	C
Structural Mechanics and Analysis	C	C
Structural Design Project	C	C
<b>THIRD-YEAR MODULES (Final year of BEng)</b>		
Advanced Steel and Concrete Design	C	C
Feasibility Study	C	C
Geotechnical and Civil Engineering Design	C	C
Sustainability in the Built Environment	C	C
Individual Research Project (Civil and Structural Engineering)	C	C
Transportation Studies	O	O
Sustainable Energy	O	O
Project Management and Six Sigma	O	O
<b>FINAL-YEAR MEng MODULES</b>		
Advanced Final-Year Project		C
Advanced Geotechnics		C
Construction Management		C
Advanced Structural Analysis and Earthquake Engineering		C
Water and Waste Water Treatment		O
Risk Assessment and Management		O

UNDERGRADUATE

# Mechanical Engineering



Courses are accredited by the Institution of Mechanical Engineers (IMechE), and can lead to Chartered Engineer (CEng) accreditation.

## Entry requirements

A levels: BEng and MEng: **112 UCAS points - BBC** to include A level Maths minimum grade C, plus a minimum of GCSE English Language and Maths at grade C or 4 (equivalents accepted).

Minimum IELTS 6.0 or equivalent.

C = Core module  
O = Option module

Start date for all these courses is September.

Current modules 2021/22.  
Programmes are reviewed annually.

DEGREE	BEng (Hons)	MEng
UCAS CODE	H300 3yr FT H301 4yr SW	H305 4yr FT H306 5yr SW
<b>FIRST-YEAR MODULES</b>		
Design, Build and Test (Mechanical Engineering)	C	C
Mathematical Methods and Applications	C	C
Electronics and Mechanics	C	C
Engineering Materials	C	C
Thermofluids 1	C	C
Computer Aided Engineering	C	C
<b>SECOND-YEAR MODULES</b>		
Further Mathematics and Statistics	C	C
Materials and Manufacturing Technologies	C	C
Solid Mechanics and Vibration Analysis	C	C
Group Project	C	C
Instrumentation, Measurement and Control Systems	C	C
Thermofluids 2	C	C
<b>THIRD-YEAR MODULES (Final year of BEng)</b>		
Individual Research Project	C	C
Integrated Design	C	C
Materials Failure Analysis and Reliability	C	C
Sustainable Energy	O	O
Advanced Fluid Mechanics with Aerodynamics	O	O
Vehicle Design and Analysis	O	O
Project Management and Six Sigma	O	O
Petroleum Engineering	O	O
<b>FINAL-YEAR MEng MODULES</b>		
Team Project		C
Advanced Solid Mechanics		C
Modelling and Optimisation		C
Risk Assessment and Management		O
Polymer and Materials Engineering		O
Vehicle Powertrain and Dynamics		O
Noise Vibration and Harshness		O

UNDERGRADUATE

# Medical and Healthcare Technology




## Entry requirements

A levels: BSc: **112 UCAS points – BBC** to include Maths or a science subject at A level.  
BEng and MEng: **112 UCAS points - BBC** to include A level Maths minimum grade C Plus a minimum of GCSE English Language and Maths at grade C or 4 (equivalents accepted).

Minimum IELTS 6.0 or equivalent.

**C** = Core module

**O** = Option module

Start date for all these courses is September.

Current modules 2020/21.

Programmes are reviewed annually.

	Clinical Technology	Biomedical Engineering	Biomedical Engineering
DEGREE	BSc (Hons)	BEng (Hons)	MEng
UCAS CODE	H900 3yr FT H901 4yr SW	H1B1 3yr FT H1BC 4yr SW	HB11 4yr FT HB1C 5yr SW
<b>FIRST-YEAR MODULES</b>			
Design, Build and Test (Biomedical)	C	C	C
Mathematical Methods and Applications		C	C
Electronics and Mechanics	C	C	C
Engineering Materials		C	C
Thermofluids		C	C
Computer Aided Engineering	C	C	C
Mathematics for Clinical Technologists	C		
Radiology and Radiation Engineering	C		
Clinical Instrumentation and Imaging	C		
<b>SECOND-YEAR MODULES</b>			
Applied Epidemiology	C		
Clinical Movement Analysis	C	C	C
Embedded Electronics	C	C	C
Healthcare Technology Project	C	C	C
Cell and Tissue Biology	C	C	C
Functional Anatomy and Human Physiological Measurements	C	C	C
Further Mathematics and Statistics		C	C
<b>THIRD-YEAR MODULES (Final year of BEng and BSc)</b>			
Clinical Diagnostics	C		
Renal Technology	O		
Biomaterials with Implant Design and Technology	O	C	C
Rehabilitation and Prosthetics	C	C	C
Medical Ethics and Quality Management	C	C	C
Individual Research Project	C	C	C
Project Management and Six Sigma		C	C
<b>FINAL-YEAR MEng MODULES</b>			
Team Project			C
Regenerative Medicine			C
Telemedicine and E-Health			C
Clinical Biomechanics			C
Clinical Diagnostics			C

UNDERGRADUATE

# Computer Science



Our courses are industry informed by companies such as the BBC, BT, IBM, Microsoft and ServiceNow.

## Entry requirements

Our Computer Science courses require **112 UCAS points** – BBC at A level, with no specific subject requirements. Plus a minimum of GCSE English Language and Maths at grade C or 4 (equivalents accepted).

Minimum IELTS 6.0 or equivalent.

C = Core module  
O = Option module

Start date for all these courses is September.

Current modules 2021/22.  
Programmes are reviewed annually.

	Computer Science	Computer Science for Cyber Security	Software Engineering
DEGREE	BSc (Hons)	BSc (Hons)	BEng (Hons)
UCAS CODE	I100 3yr FT I101 4Yr SW	I190 3yr FT I191 4yr SW	I300 3yr FT I301 4yr SW
<b>FIRST-YEAR MODULES</b>			
Computer Architecture and Systems Software	C	C	C
Fundamentals of Programming	C	C	C
Internet Technologies	C	C	C
Mathematics for Computing	C	C	C
Software Design and Development	C	C	C
Technical and Professional Skills	C	C	C
<b>SECOND-YEAR MODULES</b>			
Computer Communications and Networks	C	C	C
Artificial Intelligence	C	C	C
Data Structure and Algorithms	C	C	C
Database Systems	C	C	C
Enterprise-Pro	C	C	C
Numerical Analysis	C	C	C
System Security Management		C	C
<b>FINAL-YEAR MODULES</b>			
Final-Year Project	C	C	C
Concurrent and Distributed Systems	C		O
Cyber Security	O	C	
Foundations of Cryptography		C	
Principles of Security Technologies	O	C	O
Large-Scale Data-Driven Applications	O	O	C
Machine Learning	O		O
Mobile Application Development	O	O	C
Numerical Methods and Computer Graphics	C		O
Human Computer Interaction	O		O
Software Systems Design and Testing	O		C
Choose from a wide range of specialist option modules, please see our website	O	O	O

UNDERGRADUATE

# Film and Television Production



Access to cutting-edge broadcast television production and post-production equipment, including a full HD broadcasting truck and television studio.

## Entry requirements

112 UCAS points – BBC at A level, with no specific subject requirements. Plus a minimum of GCSE English Language and Maths at grade C or 4 (equivalents accepted).

Minimum IELTS 6.0 or equivalent.

C = Core module  
O = Option module

Start date for this course is September.

Current modules 2021/22.  
Programmes are reviewed annually.

DEGREE	BA (Hons)
UCAS CODE	P309 3yr FT P310 4yr SW
FIRST-YEAR MODULES	
Stories and The Screen	C
Editing	C
Story and Scriptwriting	C
Institutions and Audiences	C
Moving Image Production	C
Reading the Screen	C
SECOND-YEAR MODULES	
British Film and Television Fictions	C
Drama Production	C
Factual Film and Television	C
Factual Production	C
Soundscapes	C
Storytelling, Narrative and Experience	C
FINAL-YEAR MODULES	
Individual Project	C
Major Project Pre-Production	C
Major Project Production	C
Experimental Filmmaking	O
Practices of Representation	O
Digital Compositing and Post Production	O



## UNDERGRADUATE

# Animation, Games and Visual Effects



Strong links with international companies such as DreamWorks, Framestore, Aardman, Rockstar, Double Negative and MPC.

## Entry requirements

112 UCAS points – BBC at A level, with no specific subject requirements. Plus a minimum of GCSE English Language and Maths at grade C or 4 (equivalents accepted).

Minimum IELTS 6.0 or equivalent.

C = Core module  
O = Option module

Start date for all these courses is September.

Current modules 2021/22.  
Programmes are reviewed annually.

	Animation	Film and Visual Effects Technology	Game Design and Development	Graphics for Games
DEGREE	BSc (Hons)	BSc (Hons)	BSc (Hons)	BA (Hons)
UCAS CODE	W615 3yr FT W616 4yr SW	W613 3yr FT W614 4yr SW	I621 3yr FT I622 4yr SW	W126 3yr FT W216 4yr SW
<b>FIRST-YEAR MODULES</b>				
3D Character Modelling and Animation	C		C	C
Application Programming and Development		C		
Conventions of Animation	C			
Creativity and Imagination	C	C	C	C
History and Conventions of Computer Games			C	C
Introduction to 3D Computer Animation	C	C	C	C
Introduction to Digital Visual Effects		C		
Introduction to Computer Programming for Games			C	
Play Theory and Practice			C	C
Drawing for Production	C			C
Moving Image Production		C		
Editing		C		
<b>SECOND-YEAR MODULES</b>				
3D Character Creation	C			C
Advanced Character Animation	C			C
Advanced Drawing for Production	C			C
Classical Animation	C	C		
Concept and Idea Development				
Digital Compositing and Post-Production	O	C		
Digital Preparation, Rotoscoping and Matte Painting		C		
Environment, Set and Prop Creation			O	C
Facial Modelling and Animation	C			O
Game Appreciation and Industry Analysis			C	C
Game Design, Programming and Development			C	
Advanced Game Technology and Development			O	
Motion Capture and Digital Scanning	O	C	O	O
Effects Animation and Dynamics for VFX				
Application Programming and Development			O	
Look Development, Environment Creation, Lighting and Rendering	O	O	O	C
Script Programming and Technical Animation		C	C	
Soundscapes		C		
Storytelling, Narrative and Experience			O	O
Choose from a range of option modules, see website	O	O	O	O
<b>FINAL-YEAR MODULES</b>				
Individual Project	C	C	C	C
Major Project Pre-Production	C	C	C	C
Major Project Production	C	C	C	C
Simulation Effects for Animation and Games			C	
Choose from a range of option modules, see website	O	O	O	O



UNDERGRADUATE

# Virtual and Augmented Reality



We are home to the **Digital Media Working Academy**, which employs current students and recent graduates to work on live web, television, film, photographic, animation and interactive projects.

## Entry requirements

112 UCAS points - BBC at A level, with no specific subject requirements. Plus a minimum of GCSE English Language and Maths at grade C or 4 (equivalents accepted).

Minimum IELTS 6.0 or equivalent.

C = Core module

O = Option module

Start date for this course is September.

Current modules 2021/22.

Programmes are reviewed annually.

DEGREE	BSc (Hons)
UCAS CODE	I700 3yr FT I701 4yr SW
FIRST-YEAR MODULES	
Creativity and Imagination	C
Introduction to 3D Computer Animation	C
Introduction to Computer Programming for Games	C
Introduction to Virtual Reality	C
3D Character Modelling and Animation	C
Application Programming Development	C
SECOND-YEAR MODULES	
Augmented Reality Design Principles and Practice	C
3D and VR Workflows and Theory	C
Look Development, Lighting and Advanced Rendering	C
Advanced Game Technology and Development	C
Soundscapes	C
Storytelling, Narrative and Experience	O
Digital Compositing and Post-Production for VR	O
Motion Capture and Digital Scanning	O
FINAL-YEAR MODULES	
Individual Project	C
Major Project Pre-Production	C
Major Project Production	C
Look Development, Environment Creation, Lighting and Rendering	O
Digital Compositing and Post Production	O

UNDERGRADUATE

# Applied Artificial Intelligence



**Courses are taught by research active staff with a focus on applications of AI: healthcare, business, engineering, social sciences.**

### Entry requirements

112 UCAS points - BBC at A level in at least one technical subject such as Mathematics, Computing or Chemistry, Electronics, Science, Design and Technology (Systems and Control) or Physics. Applications are welcome from students with non-standard qualifications with relevant work experience.

Minimum IELTS 6.0 or equivalent.

C = Core module

Start date for this course is September.

Current modules 2021/22.  
Programmes are reviewed annually.

DEGREE	BSc (Hons)
UCAS CODE	I400 3yr FT
<b>FIRST-YEAR MODULES</b>	
AI Methods and Tools	C
Machine Learning Methods and Models	C
Fundamentals of AI and Data Analytics	C
Principles of Responsible Management and Practice	C
AI Project Design and Development	C
<b>SECOND-YEAR MODULES</b>	
Data Science for AI	C
Multidisciplinary Issues and Innovations	C
Safe AI: Ethics, Law and Governance	C
Discipline-specific AI Project	C
<b>FINAL-YEAR MODULES</b>	
Advanced AI Methods and Tools	C
The Applied AI Professional	C
Industrial AI Projects	C

**This is where I brought  
my research to life**

Hanady Almahmood, from Jordan  
PhD in Civil and Structural Engineering



## POSTGRADUATE

# Advanced Biomedical Engineering



We provide world-class state-of-the-art facilities, including a bioaerosol test facility, cell/tissue engineering laboratory, electrostatics lab, and human movement lab.

## Entry requirements

A second-class Honours degree or equivalent in Science, Engineering or Technology. Candidates who do not fulfil the normal entry requirements but have extensive engineering, clinical, biomedical or related experience will be considered on an individual basis.

Minimum IELTS 6.0 or equivalent.

C = Core module  
O = Option module

Start date for this course is September and January.

Current modules 2021/22.  
Programmes are reviewed annually.

DEGREE	MSc 12 months full-time
<b>STAGE ONE AND TWO MODULES</b>	
Regenerative Medicine	C
Telemedical and E-Health	C
Clinical Biomechanics	C
Clinical Diagnostics	O
Big Data Systems and Analytics	O
Polymer and Materials Engineering	O
Supply Chain Management and Production	O
Food and Pharmaceutical Process Engineering	O
Big Data Visualisation	O
Materials Characterisation	O
<b>STAGE THREE MSc MODULE</b>	
MSc Project	C



## POSTGRADUATE

# Advanced Chemical and Petroleum Engineering



Choice of three routes: Chemical Engineering, Petroleum Engineering, or Polymer Engineering.

## Entry requirements

A second-class Honours degree or equivalent in Chemical Engineering or Petroleum Engineering.

Minimum IELTS 6.0 or equivalent.

C = Core module  
O = Option module

Start date for this course is September and January.

Current modules 2021/22.  
Programmes are reviewed annually.

DEGREE	MSc 12 months full-time
<b>STAGE ONE AND TWO MODULES</b>	
Desalination Technology	C
Transport Phenomena	C
Upstream Production and Refinery Operations	C
Food and Pharmaceutical Process Engineering	C
Big Data Systems and Analytics	O
Polymer and Materials Engineering	O
Risk Assessment and Management	O
Water and Waste Water Treatment	O
Supply Chain Management and Production	O
Oil and Gas Management	O
<b>STAGE THREE MSc MODULE</b>	
MSc Project (Spans stages one, two and three)	C



## POSTGRADUATE

# Advanced Civil and Structural Engineering

**ice**  
Institution of Civil Engineers

The Institution  
of Structural  
Engineers

Students are taught by research active staff who are experts in their field and give you opportunities to work with the research team in externally funded projects or in PhD projects.

## Entry requirements

**Second-class Honours degree** or equivalent in a relevant discipline.

Candidates who do not fulfil the normal entry requirements but have extensive industrial experience in a related area are considered on an individual basis.

Minimum IELTS 6.0 or equivalent.

**C** = Core module

**O** = Option module

Start date for this course is September and January

Current modules 2021/22.

Programmes are reviewed annually.

DEGREE	MSc 12 months full-time
<b>STAGE ONE AND TWO MODULES</b>	
Advanced Geotechnics	C
Advanced Structural Design	C
Water and Waste Water Treatment	C
Construction Management	O
Advanced Structural Analysis and Earthquake Engineering	O
Big Data Systems and Analytics	O
Risk Assessment and Management	O
Supply Chain Management and Production	O
<b>STAGE THREE MSc MODULE</b>	
MSc Project	C



## POSTGRADUATE

# Advanced Mechanical Engineering

Institution of  
**MECHANICAL ENGINEERS**

Our MSc is accredited by the Institution of Mechanical Engineers (IMechE), and we have excellent links with global companies, such as Ford.

## Entry requirements

**A second-class Honours degree** or equivalent in a relevant discipline.

Candidates who do not fulfil the normal entry requirements but have extensive industrial experience in a related area are considered on an individual basis.

Minimum IELTS 6.0 or equivalent.

**C** = Core module

**O** = Option module

Start date for this course is September and January.

Current modules 2021/22.

Programmes are reviewed annually.

DEGREE	MSc 12 months full-time
<b>STAGE ONE AND TWO MODULES</b>	
Modelling and Optimisation	C
Advanced Solid Mechanics	C
Big Data Systems and Analytics	O
Risk Assessment and Management	O
Polymer and Materials Engineering	O
Supply Chain Management and Production	O
Vehicle Powertrain and Dynamics	O
Automotive Tribology and Noise, Vibration and Harshness	O
Advanced Machine Learning	O
<b>STAGE THREE MSc MODULE</b>	
MSc Project	C



## POSTGRADUATE

# Automotive Systems Engineering

This programme is targeted at Engineers who wish to both broaden and deepen their knowledge.

## Entry requirements

A second-class Honours degree or equivalent in a relevant discipline.

Applications from candidates with Physics, Mathematics, and Computer Science degrees with relevant background in Maths and Physics, are welcomed.

Candidates who do not fulfil the normal entry requirements but have extensive industrial experience in a related area will be considered on an individual basis.

Minimum IELTS 6.0 or equivalent.

C = Core module

Start date for this course is September.

Current modules 2021/22.  
Programmes are reviewed annually.

DEGREE	MSc 12 months full-time
<b>STAGE ONE AND TWO MODULES</b>	
Modelling and Optimisation	C
Team Project	C
Automotive Tribology and Noise Vibration and Harshness	C
Vehicle Powertrain and Dynamics	C
<b>STAGE THREE MSc MODULE</b>	
MSc Project	C

\* Students can exit with PGCert (60 credits) or PGDip (120 credits). See website for details



## POSTGRADUATE

# Construction and Project Management

Broadening knowledge to enable graduates to effectively manage projects within the built environment.

## Entry requirements

A second-class Honours degree or equivalent in a relevant engineering discipline.

Applications may be accepted from other backgrounds if they have extensive experience of working in the construction industry.

Minimum IELTS 6.0 or equivalent.

C = Core module  
O = Option module

Start date for this course is September and January.

Current modules 2021/22.  
Programmes are reviewed annually.

DEGREE	MSc 12 months full-time
<b>STAGE ONE AND TWO MODULES</b>	
Management of Project Procurement and Construction Contract	C
Supply Chain Management and Production	C
Construction Management	C
Risk Assessment and Management	C
Sustainability in the Built Environment	O
Sustainable Development Law in Contemporary Business and Society	O
Project Management and Six Sigma	O
International Commercial Dispute Resolution	O
<b>STAGE THREE MSc MODULE</b>	
MSc Project	C



## POSTGRADUATE

# Big Data Science and Technology



Provides industry with graduates that are ready and able to develop solutions to address challenges for big data analytics and developing big data systems.

## Entry requirements

**2:2 or above** in Computer Science, Information Technology, Mathematics, Engineering, Telecommunication or other Computer-related subjects (including Management disciplines, e.g. Finance, Economics, Business Studies, etc.)

Those without a first degree but with other relevant experience are considered on an individual basis.

Minimum IELTS 6.0 or equivalent.

**C** = Core module

**O** = Option module

Start date for this course is September and January.

Current modules 2021/22.

Programmes are reviewed annually.

DEGREE	MSc 12 months full-time
<b>STAGE ONE AND TWO MODULES</b>	
Software Development	C
Big Data Systems and Analytics	C
Big Data Visualisation	C
MSc Group Project	C
Advanced Machine Learning	C
Risk Assessment and Management	O
Advanced IoT (Data science for IoT)	O
Internet Security and Protocols	O
<b>STAGE THREE MSc MODULE</b>	
MSc Dissertation	C



## POSTGRADUATE

# Cyber Security



Gain additional qualifications in: Certified ISO/IEC 27001 Lead Implementer; and CEH v10 Ethical Hacking.

## Entry requirements

**2:2 or above** in Computer Science, Computer Engineering, Informatics or other Computer-related subjects (including Management disciplines, e.g. Finance, Economics, Business Studies, etc.)

Those who do not fulfil the normal entry requirements but have extensive industrial experience in a related area are considered on an individual basis.

Minimum IELTS 6.0 or equivalent.

**C** = Core module

Start date for this course is September and January.

Current modules 2021/22.

Programmes are reviewed annually.

DEGREE	MSc 12 months full-time
<b>STAGE ONE AND TWO MODULES</b>	
Business Systems Security	C
Networks and Protocols	C
Advanced Cryptography	C
Internet Security and Protocols	C
ISO27000 Framework (ISMS)	C
Ethical Hacking	C
<b>STAGE THREE MSc MODULE</b>	
MSc Dissertation	C



## POSTGRADUATE

# Internet of Things

Carry out dissertation projects with real-world clients through the new Internet of Things Innovation Lab and the Enterprise Computing Centre.

## Entry requirements

**2:2 or above** in Computer Science, Computer Engineering, Informatics or other Computer-related subjects (including Management disciplines, e.g. Finance, Economics, Business Studies, etc.)

Those without a first degree but with other relevant experience are considered on an individual basis.

Minimum IELTS 6.0 or equivalent.

C = Core module  
O = Option module

Start date for this course is September and January.

Current modules 2021/22.  
Programmes are reviewed annually.

DEGREE	MSc 12 months full-time MSc 2yr PT
<b>STAGE ONE AND TWO MODULES</b>	
Internet of Things	C
Advanced IoT (Data Science for IoT)	C
MSc Group Project	C
Mobile Application Development	C
Software Development	O
Big Data Systems and Analytics	O
Big Data Visualisation	O
Advanced Machine Learning	O
Risk Assessment and Management	O
<b>STAGE THREE MSc MODULE</b>	
MSc Dissertation	C



## POSTGRADUATE

# Filmmaking

This innovative course will engage you in the production of advanced digital film products.

## Entry requirements

**2:2 or above** in an area relevant to your proposed programme of study.

Or

Any subject, together with skills and substantial work experience in a relevant area.

Those without a first degree but with extensive related industrial experience are considered on an individual basis.

Minimum IELTS 6.0 or equivalent.

C = Core module

Start date for this course is September.

Current modules 2021/22.  
Programmes are reviewed annually.

DEGREE	MA 12 months full-time
<b>STAGE ONE AND TWO MODULES</b>	
Cinematic Language	C
Independent Filmmaking	C
Film Industry Practices	C
Post-Production	C
Short-Form Commissioning	C
Screen Realism	C
<b>STAGE THREE MSc MODULE</b>	
MA Project	C





POSTGRADUATE

# Smart Grids and Energy Systems



**IET** Accredited Programme®

The programme utilises a range of learning methods to offer a personalised, research-led, and digitally rooted learning experience with an international focus.

## Entry requirements

**2:2 or above** or an equivalent overseas qualification, in an area relevant to your proposed programme of study, for example: Computer Science, Electrical Engineering, Mechanical Engineering, Industrial Engineering, Civil Engineering, Maths, or Physics.

Those who do not fulfil the normal entry requirements but have extensive industrial experience in a related area are considered on an individual basis.

Minimum IELTS 6.0 or equivalent.

**C** = Core module

Start date for this course is September.

Current modules 2021/22.

Programmes are reviewed annually.

DEGREE	MSc 12 months full-time
<b>STAGE ONE AND TWO MODULES</b>	
Smart Grids and Power Systems Analysis	C
Internet of Things	C
Smart Grids Operation and Economics	C
Research Methods and Skills	C
Sustainable Energy	C
Big Data Systems and Analytics	C
<b>STAGE THREE MSc MODULE</b>	
MSc Project	C

## UNDERGRADUATE

# Public Health and Community Wellbeing

**Tackle real world health challenges on placement.**

## Entry requirements

A levels: **112 UCAS points - BBC**, to include at least one full A level (there are no specific subject requirements), plus a minimum of GCSE English Language at grade C or 4 (or equivalent).

Minimum IELTS 6.5 or equivalent.

**C** = Core module  
**O** = Option module

Start date for this course is September.

Current modules 2021/22.  
Programmes are reviewed annually.

DEGREE	BA (Hons)
UCAS CODE	B992 3yr FT
<b>STAGE ONE AND TWO MODULES</b>	
Introduction to Public Health	C
Lifestyle Choice and Behaviour Change	C
Inequalities in Society	C
Social Policy, Society and Welfare	C
Preparing for Professional Practice	C
Community Development and Engagement in Multicultural Populations	C
Placement: Professional Practice	C
Evaluating Public Health Research	C
Health Education and Promotion	C
Mental Health and Wellbeing	C
Applied Epidemiology	O
Global Challenges in Public Health	O
<b>STAGE THREE MODULES</b>	
Independent Study: Finding Health Solutions	C
Surviving and Thriving in Organisations	C
Politics and Policy in Health and Wellbeing	C
Project Management and Evaluation	C
Ethical Challenges in Public Health	C



UNDERGRADUATE

# Nursing



This is a practical, patient-centred course with equal amounts of theory and clinical practice, which allows you to experience a range of healthcare services.

## Entry requirements

A levels: **112 UCAS points – BBC**, to include at least 2 full A levels (there are no specific subject requirements). Plus a minimum of GCSE English Language and Mathematics at grade C or 4 (equivalents accepted).

Minimum IELTS 7.0 or equivalent.

C = Core module

Start date for these courses is September, or April for B742.

Current modules 2021/22.  
Programmes are reviewed annually.

	Nursing (Adult)	Nursing (Adult) – Mid Yorks Hospitals NHS Trust	Nursing (Adult) – Harrogate and District NHS Trust	Nursing (Mental Health)
DEGREE	BSc (Hons)	BSc (Hons)	BSc (Hons)	BEng (Hons)
UCAS CODE	B740 3yr FT	B742 3yr FT	B743 3yr FT	B760 3yr FT
<b>FIRST-YEAR MODULES</b>				
Nursing and Academic Practice	C	C	C	C
Practice Placement 1	C	C	C	C
Social Concepts of Health	C	C	C	C
Practice Placement 2	C	C	C	C
<b>SECOND-YEAR MODULES</b>				
Evidence Based Healthcare	C	C	C	C
Practice Placement 3	C	C	C	C
Practice Placement 4	C	C	C	C
Promoting Health	C	C	C	C
<b>THIRD-YEAR MODULES</b>				
Preparing for Professional Practice	C	C	C	C
Integrated Acute Care of the Adult	C	C	C	
Integrated Approaches to Mental Health across the Lifespan				C
Practice Placement 5	C	C	C	C
The Management of Complex Care of the Adult	C	C	C	
Managing Therapeutic Approaches and Facilitating Interventions within Mental Health Care				C
Practice Placement 6	C	C	C	C

UNDERGRADUATE

# Occupational Therapy

hcup health & care  
professions  
council

**Learn within a small cohort. Gain skills in assessment, problem solving, analysis, and interventions.**

## Entry requirements

**120 UCAS points - BBB**, from 3 full A levels. There are no specific subject requirements (although General Studies is not accepted). Plus a minimum of GCSE English Language and Mathematics and a science subject at grade C or grade 4 (equivalents accepted).

Minimum IELTS 6.5 or equivalent.

**C** = Core module

**O** = Option module

Start date for this course is September.

Current modules 2021/22.

Programmes are reviewed annually.

DEGREE	BSc (Hons)
UCAS CODE	B930 3yr FT
<b>FIRST-YEAR MODULES</b>	
Professional Knowledge and Foundations of Practice	C
Performance of Occupational Beings	C
Developing Occupational Therapy Practice	C
Professional Placement 1	C
<b>SECOND-YEAR MODULES</b>	
Enabling Occupation	C
Research Methods in Health and Sport	C
Professional Placement 2	C
Professional Placement 3	C
<b>THIRD-YEAR MODULES</b>	
Evidence-Based Practice	C
Transition into Practice	C
Professional Placement 4	C
Professional Placement 5	C
Aspirational Research Proposal	O
Evaluating Service Delivery	O
Literature Review	O
Primary Research Project	O



UNDERGRADUATE

# Physiotherapy



## 14th in the UK for Physiotherapy (Complete University Guide 2022).

### Entry requirements

A levels: **136 UCAS points - AAB**, to include minimum grade B in Biology, Human Biology, Sports Science or PE, plus a Pass in the Science Practical. Plus a minimum of GCSE English Language and Mathematics at grade C or 4 (equivalents accepted).

Minimum IELTS 6.5 or equivalent.

**C** = Core module  
**O** = Option module

Start date for this course is September.

Current modules 2021/22.  
Programmes are reviewed annually.

DEGREE	BSc (Hons)
UCAS CODE	B160 3yr FT
<b>FIRST-YEAR MODULES</b>	
Neuromusculoskeletal Practice - Peripheral	C
Developing and Promoting Health and Wellbeing	C
People, Populations and Contemporary Physiotherapy Practice	C
<b>SECOND-YEAR MODULES</b>	
Neurological Practice	C
Cardiovascular and Respiratory Practice	C
Neuromusculoskeletal Practice - Spinal	C
Research Methods in Health and Sport	C
Work-Based Learning 1	C
<b>THIRD-YEAR MODULES</b>	
Evidence-Based Practice	C
Employability and Professional Development	C
Work-Based Learning 2	C
Aspirational Research Proposal	O
Evaluating Service Delivery	O
Literature Review	O
Primary Research Project	O



UNDERGRADUATE

# MPhysiotherapy – Sport and Exercise Medicine

hpcp health & care  
professions  
council



This is a 4-year undergraduate programme leading to an integrated Master's qualification for those interested in sport and exercise alongside traditional physiotherapy.

## Entry requirements

A levels: **136 UCAS points - AAB**, to include minimum grade B in Biology, Human Biology, Sports Science or PE, plus a Pass in the Science Practical. Plus a minimum of GCSE English Language and Mathematics at grade C or 4 (equivalents accepted).

Minimum IELTS 6.5 or equivalent.

C = Core module  
O = Option module

Start date for this course is September.

Current modules 2021/22.  
Programmes are reviewed annually.

DEGREE	MPhysio
UCAS CODE	B161 4yr FT
<b>FIRST-YEAR MODULES</b>	
Developing and Promoting Health and Wellbeing	C
Neuromusculoskeletal Practice - Peripheral	C
Soft Tissue and Exercise Principles (MPhysiotherapy)	C
<b>SECOND- YEAR MODULES</b>	
Evidencing Rehabilitation in Sport and Health	C
Neurological Practice	C
Neuromusculoskeletal Practice - Spinal	C
People, Populations and Contemporary Physiotherapy Practice (MPhysiotherapy)	C
Work-Based Learning One (MPhysiotherapy)	C
<b>THIRD-YEAR MODULES</b>	
Cardiovascular and Respiratory Practice	C
Evidence-Based Practice	C
Research Methods in Health and Sport (MPhysiotherapy)	C
Sport Trauma Management (MPhysiotherapy)	C
Work Based Learning Two (MPhysiotherapy)	O
<b>FOURTH-YEAR MODULES</b>	
Employability and Professional Development (MPhysiotherapy)	C
Enhancing Sport Performance (MPhysiotherapy)	C
Evaluating Service Delivery (MPhysiotherapy)	O
Primary Research Project (MPhysiotherapy)	O
Systematic Literature Review (MPhysiotherapy)	O



# This is where I step up

Anna Zhang, from China  
BSc (Hons) Physiotherapy



## POSTGRADUATE

# Advanced Dementia Studies



THE QUEEN'S  
ANNIVERSARY PRIZES  
FOR HIGHER AND FURTHER EDUCATION  
2015

**Awarded Queen's Anniversary Prize for Higher and Further Education in 2015 for our world-leading work in dementia.**

### Entry requirements

**First degree** in a relevant subject or equivalent. You should be working/have regular contact with people with dementia. As this is a distance learning course, you must also have access to a computer with internet connection and be prepared to spend on average 15 hours a week on your studies.

Minimum IELTS 6.5 or equivalent.

C = Core module  
O = Option module

Start date for this course is September.

Current modules 2021/22.  
Programmes are reviewed annually.

DEGREE	MSc 3yr PT PGDip 2yr PT PGCert 1yr PT
<b>STAGE ONE MODULES</b>	
Critical Perspectives on Dementia: A rights-based approach	C
Evidence Appraisal and Synthesis	C
<b>STAGE TWO MODULES</b>	
Advancing Practice: Skills and Methods	C
<b>As Postgraduate Certificate, plus:</b> Post-diagnostic Support Pathways for People with Dementia, Advancing Practice: Skills and Methods	O
<b>STAGE THREE MSc MODULE</b>	
Leading Change in Practice	O



## POSTGRADUATE

# International Nursing Studies

**This programme is developed for the international student working towards an advanced practice role.**

### Entry requirements

**A first degree** in a relevant subject area, NVQ Level 6 or equivalent or a relevant postgraduate qualification. Nursing registration with the professional body in the student's home country.

Minimum IELTS 6.5 or equivalent.

C = Core module  
O = Option module

Start date for this course is September.

Please note: does not confer eligibility for NMC registration.

Current modules 2021/22.  
Programmes are reviewed annually.

DEGREE	MSc/PG Dip/ PG Cert 12 months full-time
<b>STAGE ONE AND TWO MODULES</b>	
Global Perspectives on Improving Quality in Healthcare	C
Understanding Research in International Nursing Studies	C
<b>Choose from a wide range of option modules, see website</b>	O
<b>STAGE THREE MSc MODULE</b>	
Research in International Nursing Studies	C





POSTGRADUATE

# Public Health (Master of Public Health)



Receive training in public policy, healthcare practice development, epidemiology, and community development that focuses on skills for change.

## Entry requirements

**2:1 or above** or overseas equivalent in a relevant subject area. (Those with 2:2 and a minimum of 2 years' professional public health-related experience, or a relevant degree-level professional qualification and experience in the field of public health, will also be considered.)

Minimum IELTS 6.5 or equivalent.

**C** = Core module

**O** = Option module

Start date for this course is September.

Current modules 2021/22.  
Programmes are reviewed annually.

DEGREE	MPH 12 months full-time
<b>STAGE ONE AND TWO MODULES</b>	
Introduction to Public Health and Health Promotion	C
Research in Contemporary Public Health	C
Epidemiology, Biostatistics and Communicable Diseases	C
Social Policy, Public Health and Leadership	C
Health Needs Assessment in Practice	C
Research in Contemporary Public Health (Continued)	C
<b>STAGE THREE MODULES</b>	
Global Perspectives on Improving Quality in Healthcare	O
Leading Change and Service Improvement in Health and Social Care	O
Management of Global Pharmaceutical Supply	O
Working with Communities to Improve Health	O

## POSTGRADUATE

# Leadership in Health and Social Care (International)

Designed to help you progress as an international healthcare professional.

## Entry requirements

A first degree in a relevant subject area, however applications are also welcome from students with non-standard qualifications but with significant relevant experience.

Minimum IELTS 6.5 or equivalent.

C = Core module

Start date for this course is September.

Current modules 2021/22.  
Programmes are reviewed annually.

DEGREE	MSc 12 months full-time
<b>STAGE ONE AND TWO MODULES</b>	
Health and Social Care Leadership	C
Managing People in Health and Social Care	C
Understanding Health and Social Care through Policy and Strategy	C
Leading Change and Service Improvement in Health and Social Care	C
<b>STAGE THREE MSc MODULE</b>	
Management Project with International Focus	C



## POSTGRADUATE

# Occupational Science

Study the impact of culture, environment and society on health and well-being. The only programme of its kind in the UK.

## Entry requirements

Applicants will be required to have either an **undergraduate degree** (or equivalent) in Occupational Therapy or a social or applied sciences subject at a 2:2 classification or above.

Applicants who have already achieved a Master's qualification (MA/MSc) or equivalent will also be considered for the programme.

Minimum IELTS 6.0 or equivalent.

C = Core module

Start date for this course is September pending approval.

Current modules 2021/22.  
Programmes are reviewed annually.

DEGREE	MSc 12 months full-time
<b>STAGE ONE AND TWO MODULES</b>	
Applied Occupational Science	C
Managing People in Health and Social Care	C
Leadership for Advanced Practitioners	C
Preparing for / Pursuing Primary Research	C
Preparing for / Pursuing a Systematic Review	C
<b>STAGE THREE MSc MODULE</b>	
Management Project	C

POSTGRADUATE

# PhD (Faculty of Health Studies) Doctorate



THE QUEEN'S  
ANNIVERSARY PRIZES  
FOR HIGHER AND FURTHER EDUCATION  
2015

**Dedicated, experienced staff, and purpose-built areas within the Faculty specifically for our PhD students.**

## Entry requirements

**A First or 2:1 Bachelor's degree** (or overseas equivalent), a higher degree from an approved university or institution (or in the case of Professional Doctorates, as specified in individual course regulations).

Minimum IELTS 6.5 or equivalent.

Start date: February, June or October (alternative starting dates may be considered).

## PhD (FACULTY OF HEALTH STUDIES) DOCTORATE

PhD 3-4 years full-time

PhD 6-7 years part-time

We invite applications from enthusiastic research students wishing to explore an aspect of practice related to our six research clusters, which house our professors and multidisciplinary research teams. They are:

- Living well with dementia
- Inclusion and diversity
- Health technology for quality and safety
- Public health
- Healthy childhood
- Healthcare leadership

You will receive excellent guidance, advice and support from experienced, knowledgeable and approachable supervisors on a regular basis. We welcome applications for postgraduate research degrees all year round and will consider alternative starting dates when timings don't fit around our enrolment dates of October, February and June.

## UNDERGRADUATE

# Archaeology and Archaeological Sciences



**Accredited by the Chartered Institute for Archaeologists (CIfA)**

### Entry requirements

**Forensic Archaeology and Anthropology - 112 UCAS points** - BBC to include an A level science subject, plus Pass in the Science Practical, plus a minimum of GCSE English, Maths and science at grade C or 4.

**Archaeology - 112 UCAS points** - BBC. There are no specific A level subject requirements, but you must have a minimum of GCSE English at grade C or 4.

**Heritage and Archaeology - 112 UCAS** - BBC. There are not specific A level subject requirements but you must have a minimum of GCSE English at grade C or 4

Minimum IELTS 6.0 or equivalent.

**C** = Core module  
**O** = Option module

Start date for all these courses is September.

Current modules 2021/22.  
Programmes are reviewed annually.

	Archaeology	Forensic Archaeology and Anthropology	Heritage and Archaeology
DEGREE	BSc (Hons)	BSc (Hons)	BA (Hons)
UCAS CODE	V400 3yr FT V403 4yr SW	F404 3yr FT F405 4yr SW	V404 3yr FT V405 4yr SW
<b>FIRST-YEAR MODULES</b>			
British Archaeology	C		C
Introduction to Archaeological Methods	C	C	C
Biological Anthropology: From Human Evolution to Forensic Archaeology	C	C	C
Scientific Frameworks	C	C	C
Field Recording Skills	C	C	C
Themes in World Archaeology	C		C
Principles of Forensic and Crime Scene Investigation		C	
Independent Study for Forensic Scientists		C	
<b>SECOND-YEAR MODULES</b>			
Archaeological Fieldwork	C	O	
Interpreting the Past	C		
Biometrics and Human Identification		O	
Laboratory Science		C	
Forensic Examination and Analysis of Physical Evidence		C	
Human Remains and Environmental Evidence		C	
Understanding Artefacts	O		O
Prehistoric Societies	O		O
Heritage Management with GIS	C		C
Celts, Anglo-Saxons and Vikings	O		O
Bioarchaeology: Humans, Plants and Animals	O		
Virtual Anatomy for Forensic Scientists		O	
Statistics and Databases for Forensic Scientists		C	
Relevant Elective module	O	O	
Archaeological Practice			C
Heritage and Culture			C
Bioarchaeology: Humans, Plants and Animals			O
<b>THIRD-YEAR MODULES</b>			
Dissertation	C	C	C
Forensic Archaeology		C	
Forensic Anthropology		C	
Interpretation and Presentation of Forensic Evidence for Forensic Science		C	
Advanced Archaeological Fieldwork	O		
Landscapes, Climate and Society	O		O
Current Research in Archaeological Sciences	O		
Bones, Bodies and Burials	O		O
Archaeology in Contemporary Society	C		C
Forensic Taphonomy		O	
Recent Advances in the Analysis of Human Remains		O	
Relevant Elective module	O	O	
Innovative Approaches in Heritage			C
Advanced Archaeological Practice			O

UNDERGRADUATE

# Biomedical Science



This programme will give you access to the latest techniques in digital anatomy and pathology, including carrying out digital dissection using technology only available in six UK Universities.

## Entry requirements

A levels: **Biomedical Science BSc 120 UCAS points** - BBB to include Chemistry or Biology grade B, plus Pass in the Science Practical. Plus a minimum of GCSE English, Maths and 2 sciences at grade C or 4.

Minimum IELTS 6.0 or equivalent.

C = Core module O = Option module

Start date for this course is September.

Current modules 2021/22.

Programmes are reviewed annually.

DEGREE	BSc (Hons)
UCAS CODE	C900 3yr FT
<b>STAGE ONE MODULES</b>	
Developing Professional Skills 1	C
Human Physiology	C
Introductory Biochemistry	C
Cell and Tissue Biology	C
Human Genetics and Developmental Biology	C
Introductory Microbiology	C
<b>STAGE TWO MODULES</b>	
Pathology	C
Developing Professional Skills 2	C
Immunology, Haematology and Transfusion Science	C
Medical Microbiology	C
Clinical and Analytical Biochemistry	C
Molecular Genetics	C
<b>STAGE THREE MODULES</b>	
Medical Genetics	C
Biology of Disease	C
Biomedical Science Research Project	C
Choose from a range of optional modules, see website	O



## UNDERGRADUATE

# Chemistry

Study the fundamental basis of chemistry, before specialising in major sectors of the modern chemical industry.

## Entry requirements

A levels: **BSc and MChem: 112 UCAS points** - BBC to include A level Chemistry minimum grade B (plus A level Maths grade B for Mathematical and Computational Chemistry), plus Pass in the Science Practical. Plus minimum of GCSE English, Maths and a science at grade C or 4 or equivalent.

Minimum IELTS 6.0 or equivalent.

C = Core module  
O = Option module

Start date for all these courses is September.

Current modules 2021/22.  
Programmes are reviewed annually.



	Chemistry	Chemistry (Industrial Experience)	Chemistry (Analytical Chemistry)	Chemistry (Materials Chemistry)	Chemistry (Mathematical and Computational Chemistry)	Chemistry (Biological and Medicinal Chemistry)
DEGREE	BSc (Hons)/MChem	MChem	MChem	MChem	MChem	MChem
UCAS CODE	F100 3yr FT/ F104 4yr FT	F102 4yr FT	F183 4 yr FT	F120 4yr FT	F1GL 4yr FT	F157 4yr FT
FIRST-YEAR MODULES						
Organic Chemistry 1	C	C	C	C	C	C
Physical Chemistry 1	C	C	C	C	C	C
Inorganic Chemistry 1	C	C	C	C	C	C
Practical Chemistry 1	C	C	C	C		C
Practical Chemistry 1 for Computational Chemistry					C	
Further Engineering Mathematics and Statistics					C	
Biomolecules and Cells	O	O	O	O	O	C
Elective	C	C	C	C		
SECOND-YEAR MODULES						
Organic Chemistry 2	C	C	C	C	C	C
Physical Chemistry 2	C	C	C	C	C	C
Inorganic Chemistry 2	C	C	C	C	C	C
Practical Chemistry 2	C	C	C	C	C	C
Computational Chemistry					C	
Biomolecules and Cells	O	O	O	O	O	
Cosmetic Science	O	O	O	O	O	
Elective	C	C	C	C		
THIRD-YEAR MODULES						
Organic Chemistry 3	C	C	C	C	C	C
Introduction to Polymer Science	C	C	C	C	C	C
Bio-organic and Bio-inorganic Chemistry	C	C	C	C	C	C
Molecular Analysis	C	C	C	C	C	C
Advanced Laboratory and Research Skills	C	C	C	C		C
Computational Chemistry Skills and Independent Research					C	
FOURTH-YEAR MODULES						
For Fourth-Year core and optional modules, see website						

UNDERGRADUATE

# Clinical Sciences



This programme is ideal for anyone who wants to combine an interest in science with knowledge and understanding of health and health-related issues.

## Entry requirements

**Clinical Sciences BSc 120 UCAS points** - BBB to include Chemistry and Biology grade B, plus Pass in the Science Practical.

**Clinical Sciences/Medicine Foundation 1 year 104 UCAS points** - BCC to include at least two A levels minimum grade C.

Plus a minimum of GCSE English, Maths, Biology and Chemistry (or Dual Award Science) at grade C or 4.

Minimum IELTS 6.5 or equivalent.

**C** = Core module  
**O** = Option module

Start date for these courses is September.

Current modules 2021/22.  
Programmes are reviewed annually.

	Clinical Sciences	Clinical Sciences/ Medicine Foundation
<b>DEGREE</b>	<b>BSc (Hons)</b>	<b>Foundation Certificate</b>
<b>UCAS CODE</b>	<b>B990 3yr FT</b>	<b>B991 1yr FT</b>
<b>FOUNDATION YEAR MODULES</b>		
Chemistry for Clinical Sciences		<b>C</b>
Biology for Clinical Sciences		<b>C</b>
Laboratory and Study Skills for Clinical Sciences/Medicine		<b>C</b>
Health and Society		<b>C</b>
Personal and Professional Development		<b>C</b>
Special Studies		<b>C</b>
<b>Students completing the Certificate of Foundation Studies in Clinical Sciences/Medicine can then progress to Year One of the Clinical Sciences degree and progress to BSc (Hons) Clinical Sciences</b>		
<b>STAGE ONE MODULES</b>		
Integrated Medical Sciences	<b>C</b>	
Personal and Professional Development, Society and Health	<b>C</b>	
Cardiovascular, Respiratory and Renal Systems	<b>C</b>	
Special Studies 1	<b>C</b>	
Nutrition and Energy	<b>C</b>	
<b>STAGE TWO MODULES</b>		
Immunology, Haematology and Transfusion Science	<b>O</b>	
Clinical and Analytical Biochemistry	<b>O</b>	
Pathology	<b>O</b>	
Special Studies 2	<b>C</b>	
Personal, Career and Professional Development	<b>C</b>	
Endocrinology and Neurobiology	<b>C</b>	
<b>Choose from a range of optional modules, see website</b>	<b>O</b>	
<b>STAGE THREE MODULES</b>		
Biology of Disease	<b>O</b>	
Common Diseases and Their Treatment	<b>O</b>	
Central Nervous System Mechanisms, Disorders and Therapeutics	<b>O</b>	
Clinical Pharmacology	<b>C</b>	
Economics of Healthcare Management	<b>C</b>	
Special Studies and Personal and Professional Development 3	<b>C</b>	
<b>Choose from a range of optional modules, see website</b>	<b>O</b>	

UNDERGRADUATE

# Forensic and Medical Sciences



## 7th in the UK for Forensic Science (Complete University Guide 2021).

### Entry requirements

A levels: Forensic Science **BSc: 112 UCAS points - BBC**. To include A level Chemistry at minimum grade B plus Pass in the Science Practical, plus a minimum of GCSE English, Maths and a science at grade C or 4 or above.

Forensic and Medical Sciences **BSc: 112 UCAS points - BBC**. To include A level Chemistry or Biology minimum grade B (preferably both), plus Pass in the Science Practical, plus a minimum of GCSE English, Maths and a science at grade C or 4.

Minimum IELTS 6.0 or equivalent.

**C** = Core module  
**O** = Option module

Start date for all these courses is September.

Current modules 2021/22.  
Programmes are reviewed annually.

Forensic Science      Forensic and Medical Sciences

DEGREE	BSc (Hons)	BSc (Hons)
UCAS CODE	F410 3yr FT F411 4yr SW	FB49 3yr FT FBK9 4 yr SW
<b>FIRST-YEAR MODULES</b>		
Inorganic Chemistry 1	C	
Organic Chemistry 1	C	
Practical Chemistry for Forensic Scientists	C	
Principles of Forensic and Crime Scene Investigation	C	C
Cell and Tissue Biology		C
Human Genetics and Developmental Biology		C
Introductory Biochemistry		C
Introductory Microbiology		C
Independent Study for Forensic Scientists	C	C
<b>SECOND-YEAR MODULES</b>		
Forensic Examination and Analysis of Physical Evidence	C	C
Inorganic Chemistry 2	C	
Organic Chemistry 2	C	
Practical Chemistry for Forensic Scientists 2	C	
Statistics and Databases for Forensic Scientists	C	C
Pathology		O
Biometrics and Human Identification		C
Medical Microbiology		O
Molecular Genetics		C
Virtual Anatomy for Forensic Sciences		C
<b>THIRD-YEAR MODULES</b>		
Analysis of Controlled Substances	C	
Interpretation and Presentation of Forensic Evidence for Forensic Science	C	C
Forensic Enquiry and Critical Case Study	C	C
Dissertation	C	C
Medical Genetics		C
Forensic Archaeology	O	
Forensic Anthropology	O	O
Forensic Taphonomy	O	O
Choose from a range of optional modules, see website	O	O



UNDERGRADUATE

# Optometry



**6th in the UK for Optometry (Complete University Guide 2021).**

### Entry requirements

A levels: **136 UCAS points** - AAB the AA grades must be in 2 pure science subjects (includes Chemistry, Biology, Physics and Maths) plus Pass in the Science Practicals. The third A level can be in any subject excluding General Studies. Plus a minimum of 5 GCSEs at grade C or 4, including English Language, Maths and at least one science (i.e. Biology, Chemistry, Physics or Dual Award Science).

Minimum IELTS 6.5 or equivalent.

C = Core module

Start date for this course is September.

Current modules 2021/22.  
Programmes are reviewed annually.

DEGREE	BSc (Hons)
UCAS CODE	B510 3yr FT
<b>STAGE ONE MODULES</b>	
Refraction and Refractive Error	C
Pure and Visual Optics	C
Physiology of Vision and Perception	C
Evidence-Based Practice and Professionalism	C
Ocular Health Assessment 1	C
<b>STAGE TWO MODULES</b>	
Ophthalmic Lenses and Dispensing	C
Clinical Optometry and Communication Skills	C
Contact Lens Practice	C
General and Ocular Pharmacology	C
Ocular Health Assessment 2	C
Assessment and Management of Binocular Vision	C
<b>STAGE THREE MODULES</b>	
Evidence-Based Optometry 2	C
Management of Ocular Disease	C
Clinical Practice and Professional Studies	C
Clinical Case Studies	C
Clinical Competence	O



UNDERGRADUATE

# Pharmacy



**Unique 5-year programme which integrates two blocks of 6-month pre-registration training.**

**Courses accredited by the General Pharmaceutical Council (GPhC).**

### Entry requirements

A levels: **128 UCAS points** - ABB the AB grades must be from Chemistry or Biology and one other Science subject, plus Pass in the Science Practical and grade B from one other subject excluding General Studies. Plus a minimum of 5 GCSEs at grade C or 4, including English Language, Maths and 2 sciences (i.e. Biology, Chemistry, Physics or Dual Award Science).

Minimum IELTS 6.5 or equivalent.

C = Core module

Start date for all these courses is September.

Current modules 2021/22.  
Programmes are reviewed annually.

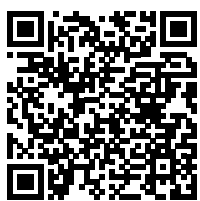
[bradford.ac.uk/courses](http://bradford.ac.uk/courses)

DEGREE	MPharm (Hons)	MPharm (Hons)
UCAS CODE	B230 4yr FT	B231 5yr SW
<b>FIRST-YEAR MODULES</b>		
Developing Professional Practice 1	C	C
Molecules to Systems	C	C
Lifecycle of a Medicine	C	C
Medicines and Health	C	C
<b>SECOND-YEAR MODULES</b>		
Developing Professional Practice 2	C	C
Pharmacy Science and Practice 1	C	C
<b>THIRD-YEAR MODULES</b>		
Developing Professional Practice 3	C	C
Pharmacy Science and Practice 2	C	C
<b>FOURTH-YEAR MODULES</b>		
Developing Professional Practice 4	C	
Pharmacy Special Studies	C	
Patient Safety and Decision Making	C	
Patient Centred Care	C	C
Placement		C
<b>FIVE-YEAR MODULES</b>		
Pre-registration Placement (Semester 1, 6 months for the 5-year MPharm)		C



**This is where I build a  
platform to succeed**

Seif Agag, from Egypt  
MPharm Pharmacy



## POSTGRADUATE

# Archaeology and Identity

Top 10 for Archaeology and 3rd in the UK for research impact (REF 2014).



## Entry requirements

**2:2 or above** in Archaeology (or a related discipline – e.g. Geography, Geology, Classics or History). Other relevant qualifications will also be considered.

Minimum IELTS 6.0 or equivalent.

**C** = Core module  
**O** = Option module

Start date for this course is September.

Current modules 2021/22.  
Programmes are reviewed annually.

DEGREE	MA / PGDip 12 months full-time
<b>STAGE ONE AND TWO MODULES</b>	
Advanced Theoretical Archaeology	C
Professional Development	C
The Age of Migration and Viking Expansion	O
Multidisciplinary Approaches to Identity	C
Analysis of Human Remains	O
Archaeometry	O
Grave Concerns: Investigating the Archaeology of Death and Burial	C
Plants and Animals in Past Societies	O
<b>STAGE THREE MSc MODULE</b>	
Dissertation (MA)	C

## POSTGRADUATE

# Archaeological Sciences

Receive in-depth specialist training in the application of modern scientific methods in archaeology.

## Entry requirements

**2:2 or above** in Archaeology (or a related discipline – e.g. Geography, Geology, Environmental Science, Geophysics or History). Other relevant qualifications will also be considered.

Minimum IELTS 6.0 or equivalent.

**C** = Core module  
**O** = Option module

Start date for this course is September.

Current modules 2021/22.  
Programmes are reviewed annually.

DEGREE	MSc/PGDip 12 months full-time
<b>STAGE ONE AND TWO MODULES</b>	
Archaeometry	C
Professional Development	C
Nature of Matter and Instrumental Analysis	C
Life Sciences Analytical Elective (for example: Separation Science and Mass Spectrometry; Spectroscopy; Imaging; OR Solid Analysis)	C
Analysis of Human Remains	O
Plants and Animals in Past Societies	O
Archaeological Prospection and Visualisation	O
Grave Concerns: Investigating the Archaeology of Death and Burial	O
Site Evaluation Strategies and GIS	O
<b>STAGE THREE MSc MODULE</b>	
Dissertation (MSc)	C



## POSTGRADUATE

# Forensic Archaeology and Crime Scene Investigation

7th in the UK for Forensic Science  
(Complete University Guide 2021).

## Entry requirements

**2:2 or above** in a relevant discipline in the humanities or science (e.g. Archaeology, Anthropology, Forensic Sciences, Law, etc). Other relevant qualifications will also be considered.

Minimum IELTS 6.0 or equivalent.

**C** = Core module

Start date for this course is September.

Current modules 2021/22.  
Programmes are reviewed annually.

DEGREE	MSc / PGDip 12 months full-time
<b>STAGE ONE AND TWO MODULES</b>	
Introduction to Forensic Archaeology and Forensic Anthropology	<b>C</b>
Crime Scene Investigation	<b>C</b>
Professional Development	<b>C</b>
Forensic Archaeology and Crime Scene Investigation	<b>C</b>
Forensic Taphonomy	<b>C</b>
Law for Expert Witnesses	<b>C</b>
<b>STAGE THREE MSc MODULE</b>	
Dissertation (MSc)*	<b>C</b>

\* This module may be replaced by: Research and Brief Writing for CSI; Advanced Fieldwork Programme for CSI; Independent Research Papers for CSI



## POSTGRADUATE

# Human Osteology and Palaeopathology

Advanced instruction in the identification  
and analysis of human remains.

## Entry requirements

**2:2 or above** in Archaeology, Anthropology, or another suitable subject (e.g. Forensic Science, Medical Science). Other relevant qualifications will also be considered. Admission is based on ability, qualifications and experience.

Minimum IELTS 6.0 or equivalent.

**C** = Core module

**O** = Option module

Start date for this course is September.

Current modules 2021/22.  
Programmes are reviewed annually.

DEGREE	MSc / PGDip 12 months full-time
<b>STAGE ONE AND TWO MODULES</b>	
Analysis of Human Remains	<b>C</b>
Professional Development	<b>C</b>
Musculoskeletal and Comparative Anatomy	<b>C</b>
Palaeopathology	<b>C</b>
Grave Concerns: Investigating the Archaeology of Death and Burial	<b>O</b>
Archaeometry	<b>O</b>
<b>STAGE THREE MSc MODULE</b>	
Dissertation (MSc)*	<b>C</b>

\* This module may be replaced by: Osteology Research Paper; Advanced Skeletal Report



## POSTGRADUATE

# Landscape Archaeology and Digital Heritage

Innovative new course using state-of-the-art facilities.

## Entry requirements

**2:2 or above** in Archaeology (or a related discipline – e.g. Geography, Geology, Environmental Science, Geophysics or History). Other relevant qualifications will also be considered.

Minimum IELTS 6.0 or equivalent.

**C** = Core module

Start date for this course is September.

Current modules 2021/22.  
Programmes are reviewed annually.



DEGREE	MSc 12 months full-time
<b>STAGE ONE AND TWO MODULES</b>	
Professional Development	C
Archaeological Prospection and Visualisation	C
Site Evaluation Strategies and GIS	C
Landscape and Heritage	C
Digital Worlds	C
Remote Sensing	C
<b>STAGE THREE MSc MODULE</b>	
Dissertation	C

## POSTGRADUATE

# Analytical Sciences

Study at the University of Bradford's state-of-the-art Analytical Centre, a £4 million facility housing major capital equipment.

## Entry requirements

**2:2 or above** in a science subject (e.g. Biosciences, Pharmaceutical Science, Chemistry, Forensic Science, Geology, Environmental Science, Archaeological Science) or substantive equivalent experience

Minimum IELTS 6.0 or equivalent.

**C** = Core module

**O** = Option module

Start date for this course is September

Current modules 2021/22.  
Programmes are reviewed annually.

DEGREE	MSc / PGDip 12 months full-time
<b>STAGE ONE AND TWO MODULES</b>	
Advanced Methods in Analytical Science	C
Research Skills, Professional Development and Commercial Awareness	C
Research Project - Preparatory Investigations	C
Spectroscopy	O
Separation Science and Mass Spectrometry	O
Imaging	O
Materials Characterisation	O
Archaeometry	O
<b>STAGE THREE MSc MODULE</b>	
MSc Research Project - Advanced Investigations	C



## POSTGRADUATE

# Bioinformatics

This programme integrates analysis of “big data” into the biomedical and pharmaceutical industries, leading to career options in one of the fastest growing sectors in the world.

**Entry requirements**

**2:2 or above** in any aspect of the biological sciences or biosciences or related life sciences courses.

A medical degree would also be appropriate.

Minimum IELTS 6.0 or equivalent.

**C** = Core module

Start date for this course is September.

Current modules 2021/22.  
Programmes are reviewed annually.

DEGREE	MSc 12 months full-time
<b>STAGE ONE AND TWO MODULES</b>	
Principles of Bioinformatics	<b>C</b>
'Omics' Techniques in Biology and Healthcare	<b>C</b>
Practical Skills in Research	<b>C</b>
Research Project Preparation and Plan	<b>C</b>
Research Project 1	<b>C</b>
Advanced Bioinformatics	<b>C</b>
<b>STAGE THREE MSc MODULE</b>	
MSc Research Project 2	<b>C</b>



## POSTGRADUATE

# Materials Chemistry

Opportunity to specialise in areas such as polymer chemistry, supramolecular chemistry or nanosciences.

**Entry requirements**

**2:2 or above** in chemistry, chemical engineering, materials science, biochemistry or other degrees with a significant element of core chemistry (or 2:2 with 2 years' relevant industrial experience).

Minimum IELTS 6.0 or equivalent.

**C** = Core module **O** = Option module

Start date for this course is September.

Current modules 2021/22.  
Programmes are reviewed annually.

DEGREE	MSc 12 months full-time
<b>STAGE ONE AND TWO MODULES</b>	
Research Skills, Professional Development and Commercial Awareness	<b>C</b>
Research Project - Preparatory Investigations	<b>O</b>
Fundamentals of Nano and Supramolecular Materials	<b>O</b>
Introduction to Polymer Science	<b>O</b>
Materials in Electronics	<b>O</b>
Materials Characterisation	<b>O</b>
<b>STAGE THREE MSc MODULE</b>	
MSc Research Project - Advanced Investigations	<b>C</b>



POSTGRADUATE

## Medical Bioscience

World-leading diagnostic technology laboratory facilities incorporating a histopathology laboratory and a digital pathology suite.



### Entry requirements

**2:2 or above** in a related scientific discipline.

Minimum IELTS 6.0 or equivalent.

**C** = Core module

**O** = Option module

Start date for this course is September.

Current modules 2021/22.

Programmes are reviewed annually.

DEGREE	MSc 12 months full-time
<b>STAGE ONE AND TWO MODULES</b>	
Practical Skills in Research	C
Molecular and Cell Biology	C
Research Project 1	C
Research Project Preparation and Plan	C
Neuroendocrine Basis of Regulation and Metabolism	O
Skin Biology, Stem Cells and Regenerative Medicine	O
Principles of Bioinformatics	O
Pathophysiological Basis of Chronic Disease	O
Innovation in Life Science Industry: From Concept to Market Place	O
Advanced Bioinformatics	O
<b>STAGE THREE MSc MODULE</b>	
Research Project 2	C

POSTGRADUATE

## Skin Science and Stem Cell Biology

Study in the internationally-renowned Centre for Skin Sciences, a leading centre of excellence for research in the skin and hair biology fields.

### Entry requirements

**2:2 or above** in any aspect of the biological sciences or a related life sciences course. A medical degree would also be appropriate.

Minimum IELTS 6.0 or equivalent.

**C** = Core module

Start date for this course is September

Current modules 2021/22.

Programmes are reviewed annually.

DEGREE	MSc 12 months full-time
<b>STAGE ONE AND TWO MODULES</b>	
Practical Skills in Research	C
Molecular and Cell Biology	C
Skin Biology, Stem Cells and Regenerative Medicine	C
Innovation in Life Science Industry: From Concept to Market Place	C
Research Project 1	C
Research Project Preparation and Plan	C
<b>STAGE THREE MSc MODULE</b>	
Research Project 2	C





POSTGRADUATE

# Cancer Drug Discovery

Hosted by the Institute of Cancer Therapeutics, which has an international reputation as a centre of excellence in cancer pharmacology.



## Entry requirements

**2:2 or above** in a scientific discipline in chemical or biological sciences (study of chemical sciences at undergraduate level is desirable). Other relevant qualifications and experience are considered.

Minimum IELTS 6.0 or equivalent.

**C** = Core module

**O** = Option module

Start date for this course is September.

Current modules 2021/22.

Programmes are reviewed annually.

DEGREE	MSc 12 months full-time
<b>STAGE ONE AND TWO MODULES</b>	
Principles of Drug Discovery	C
Practical Skills in Research	C
Critical Appraisal	C
Case Studies in Drug Discovery	C
Preclinical Models for Drug Evaluation	C
Innovation in Science Industry: From Concept to Marketplace	O
Chemical Toolbox for Drug Discovery	O
Molecular Mechanisms of Toxicity	O
<b>STAGE THREE MSc MODULE</b>	
MSc Research Project in Cancer Therapeutics	C

POSTGRADUATE

# Cancer Pharmacology

Pioneering research in target-orientated therapeutic interventions for cancer.

## Entry requirements

**2:2 or above** in biological or medical sciences or other areas related to cancer pharmacology. Other relevant qualifications and experience are considered..

Minimum IELTS 6.0 or equivalent.

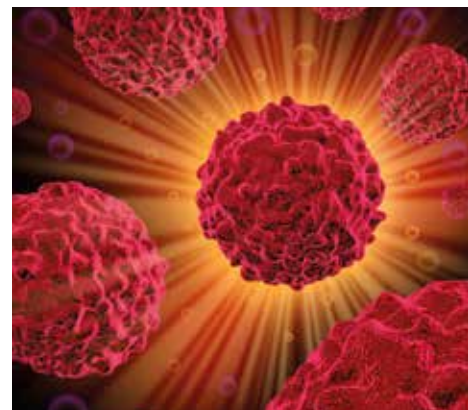
**C** = Core module

Start date for this course is September.

Current modules 2021/22.

Programmes are reviewed annually.

DEGREE	MSc 12 months full-time
<b>STAGE ONE AND TWO MODULES</b>	
Molecular Basis of Cancer and Cancer Therapy	C
Preclinical Models for Drug Evaluation	C
Cancer Pharmacology	C
Critical Appraisal	C
Practical Skills in Research	C
Innovation in Science Industry: From Concept to Marketplace	C
Case Studies in Drug Discovery	C
<b>STAGE THREE MSc MODULE</b>	
MSc Research Project in Cancer Therapeutics	C



## POSTGRADUATE

# Drug Toxicology and Safety Pharmacology

Receive advanced training in the area of preclinical toxicology with an emphasis on the molecular in vitro and in vivo aspects of toxicological assessment.



### Entry requirements

**2:2 or above** in a related scientific discipline e.g. biosciences, chemistry, biomedical, medical, pharmaceutical, pharmacological or toxicological sciences. Other relevant qualifications and experience are considered.

Minimum IELTS 6.0 or equivalent.

**C** = Core module  
**O** = Option module

Start date for this course is September.

Current modules 2021/22.  
Programmes are reviewed annually.

DEGREE	MSc 12 months full-time
<b>STAGE ONE AND TWO MODULES</b>	
Toxicology and Safety Pharmacology	C
Preclinical Models for Drug Evaluation	C
Molecular Mechanisms of Toxicity	C
Critical Appraisal	C
Practical Skills in Research	C
Innovation in Science Industry: From Concept to Marketplace	O
Case Studies in Drug Discovery	O
<b>STAGE THREE MSc MODULE</b>	
MSc Research Project in Cancer Therapeutics	C

## POSTGRADUATE

# Pharmaceutical Technology and Medicines Control

Strong interdisciplinary approach provides expertise across pharmaceutical sciences and process engineering.

### Entry requirements

**2:2 or above** in a relevant area such as biological sciences, chemistry, pharmacy, pharmacology or pharmaceutical sciences.

Minimum IELTS 6.0 or equivalent.

**C** = Core module  
**O** = Option module

Start date for this course is September.

Current modules 2021/22.  
Programmes are reviewed annually.

DEGREE	MSc 12 months full-time
<b>STAGE ONE AND TWO MODULES</b>	
Toxicology and Safety Pharmacology	C
Preclinical Models for Drug Evaluation	C
Molecular Mechanisms of Toxicity	C
Critical Appraisal	C
Practical Skills in Research	C
Innovation in Science Industry: From Concept to Marketplace	O
Case Studies in Drug Discovery	O
<b>STAGE THREE MSc MODULE</b>	
MSc Research Project in Cancer Therapeutics	C



POSTGRADUATE

# Master by Research (MRes)



## Develop practical scientific skills in purpose-built state-of-the-art research facilities.

### Entry requirements

To be admitted to the programme, applicants must have an undergraduate Honours qualification (minimum 2: 1) or equivalent in a scientific discipline, usually within chemistry, biology, pharmacy, biomedicine, or related fields. Candidates with a 2:2 or equivalent degree who can show relevant experience will also be considered.

For North American students a GPA of normally 2.5 and above (on a scale of 4.0), or an equivalent, is required.

Minimum IELTS 6.0 or equivalent.

### MASTER BY RESEARCH

MRes 12 months full-time

Master by Research (MRes) is a one-year research-focused postgraduate programme delivered at the Institute of Cancer Therapeutics and Faculty of Life Sciences. It provides training for working as a professional scientist, or in preparation for a PhD.

There are three specialisms available to you:

There are six specialisms available to you:

- MRes Cancer Drug Discovery
- MRes Cancer Pharmacology
- MRes Drug Toxicology and Safety Pharmacology
- MRes Molecular and Cell Biology
- MRes Chemical Biology
- MRes Pharmaceutical Technology

The programme places a strong emphasis on developing laboratory-based research skills and expertise. A six-month research project offers you an opportunity to acquire skills, and to put them into practice by carrying out cutting-edge research with a real-world impact.

The programme is organised around research-engaged learning, where the classroom and lab are sites for the production and application of new knowledge. The curriculum is designed around the principle of 'spiral learning' where core skills, knowledge, and competencies are reinforced and developed as you study.

The approach to assessment for learning is aligned to both the spiral curriculum and the principle of research-engaged learning. It is also authentic in encompassing the disciplinary and professional skills you will need to pursue a career in the associated scientific and academic fields.

See our website for further details and the study modules on offer.

## POSTGRADUATE

# PhD (School of Pharmacy & Medical Sciences) Doctorate

The most recent Research Excellence Framework (2014) rated 92% of our research as of international quality/world-leading.



## Entry requirements

Selection of PGR students will be subject to successful interview by the supervisory team and one independent member of academic staff with significant PGR supervisory experience.

Minimum IELTS 6.0 or equivalent.

## PhD (SCHOOL OF PHARMACY &amp; MEDICAL SCIENCES) DOCTORATE

PhD 3-4 years full-time

Apply to study your PhD at the Bradford School of Pharmacy and Medical Sciences, which encompasses multidisciplinary research in the Centre of Pharmaceutical Engineering Science and is also research active in the following areas:

- Education Innovation Research and Development
- Medicines Development and Pharmaceutical Sciences
- Medicines Optimisation
- Pharmacology and Experimental Therapeutics
- Institute of Cancer Therapeutics

See our PhD Research page [www.bradford.ac.uk/life-sciences/pharmacy-medical-sciences/phd-research/](http://www.bradford.ac.uk/life-sciences/pharmacy-medical-sciences/phd-research/) to view a range of funded (research council, charity, industry) and self-funded projects under each theme. You are welcome to contact the listed supervisors before submitting your application.

We welcome applications for postgraduate research degrees all year round, and will consider alternative starting dates when the timing doesn't fit with our two enrolment intake dates of October and February.

## POSTGRADUATE

# Doctorate in Medicine (MD)

Our clinical and clinically relevant research is sourced through academic staff expertise and clinical collaborators.

## Entry requirements

Candidates should be able to exhibit both professional qualifications and clinical practice.

A medical or dental qualification e.g. MBChB, MBBS, BDS, BChD.

Registration with the GMC or GDC of the UK.

A minimum of two years' clinical practice following GMC or GDC registration, with an additional year in specialist practice.

Minimum IELTS 6.0 or equivalent.

C = Core module

Start date for this course is September.

Current modules 2021/22.  
Programmes are reviewed annually.

## DEGREE

MD 2 years full-time

## MODULES

Critical Appraisal of Literature to MD Study	C
First-Year Report	C
MD Thesis	C

This programme is a research degree aimed at qualified doctors with clinical experience, providing a tailored training component accompanying student doctoral research.

Strong links between clinicians and the University are already in place and the student will develop their research questions with their clinical line manager and University supervisor(s) before undertaking appropriate experimental laboratory and/or clinical work to answer these and produce a thesis of novel publishable work.

The University is known for its strength in drug discovery (particularly cancer), diseases of the skin, and vascular disease.



# This is my purpose

Aureliana Chilengue, from Mozambique  
MSc Medical Bioscience



UNDERGRADUATE

# Accounting and Finance



**Accounting and Finance modules are accredited by professional bodies including; ICAEW, ACCA, AIA and CIMA.**

## Entry requirements

A levels: **112 UCAS points** with no specific subject requirements, plus a minimum of GCSE English and Mathematics at grade C or grade 4 or above (equivalents accepted).

Minimum IELTS 6.0 or equivalent.

**C** = Core module  
**O** = Option module

Start date for this course is September.

Current modules 2021/22.  
Programmes are reviewed annually.

DEGREE	BSc (Hons)
UCAS CODE	N420 3yr FT N421 4yr SW
FIRST-YEAR MODULES	
Principles of Responsible Management and Practice	C
Business Economics	C
Introduction to Accounting	C
Introduction to Finance	C
Business, Law and Ethics for Accountants	C
People, Work and Organisations/Work in Context	O
Operations and Technology Management	O
Foundations of Marketing	O
Principles and Practice of International Business	O
Fundamentals of Artificial Intelligence and Data Analytics	O
SECOND-YEAR MODULES	
Entrepreneurship and Employability	C
Financial Accounting	C
Financial Management	C
Management Accounting	C
Multinational Finance and Investment	C
Organisational Design and Analysis	O
Strategic Management	O
Auditing	O
Integrated Marketing Communications	O
Management of Information Systems	O
FINAL-YEAR MODULES	
Empirical Methods in Accounting and Finance	C
Risk Management and Derivatives	O
International Accounting and Reporting	C
Taxation	C
Accounting and Finance Project	C
Choose from a wide range of specialist optional modules, please see our website	O

UNDERGRADUATE

# Economics and Finance

Develop expertise of analysis and critical thought, and build skills in communication, expression and rational argument.

## Entry requirements

A levels: **112 UCAS points** with no specific subject requirements. Plus a minimum of GCSE English Language and Maths at grade C or 4 (equivalents accepted).

Minimum IELTS 6.0 or equivalent.

**C** = Core module  
**O** = Option module

Start date for all these courses is September.

Current modules 2021/22.  
Programmes are reviewed annually.

DEGREE	Economics	Finance and Economics
	BSc (Hons)	BSc (Hons)
UCAS CODE	L100 3yr FT L104 4yr SW	L113 3yr FT L115 4yr SW
<b>FIRST-YEAR MODULES</b>		
Introduction to Microeconomics	C	C
Introduction to Macroeconomics	C	C
Development of Economic Ideas	C	
Quantitative Methods for Economists	C	C
Principles of Responsible Management and Practice	C	C
Finance and Accounting for Managers	C	
Introduction to Accounting		C
Introduction to Finance		C
<b>SECOND-YEAR MODULES</b>		
Entrepreneurship and Employability	C	C
Intermediate Microeconomics	C	C
Intermediate Macroeconomics	C	C
Research Methods for Economists	C	C
Multinational Finance and Investment	C	C
Financial Management		C
Choose from a wide range of specialist optional modules, please see our website	O	
<b>FINAL-YEAR MODULES</b>		
Dissertation in Economics	C	
Dissertation in Financial Economics		C
Econometrics	C	O
Contemporary Issues in Economics	C	O
Advanced Economics	C	C
Risk Management and Derivatives		C
Current Issues in International Business	O	O
Leading and Managing People	O	O
Product and Corporate Brand Management	O	O
International Business Strategy	O	O
Human Resource Management	O	O
Interactive Services Marketing		O
Contemporary Development in Employee Relations		O
European Business and Management		O
Choose from a wide range of specialist optional modules, please see our website	O	O

## UNDERGRADUATE

# Business, Management and Marketing

**Tailor your final year studies to particular areas of business that interests you.**

## Entry requirements

A levels: **112 UCAS points** with no specific subject requirements, plus a minimum of GCSE English and Mathematics at grade C or grade 4 or above (equivalents accepted).

Minimum IELTS 6.0 or equivalent.

**C** = Core module  
**O** = Option module

Start date for all these courses is September.

Current modules 2021/22. Programmes are reviewed annually. See website for additional module options.



	Business and Management	International Business and Management	Marketing
DEGREE	BSc (Hons)	BSc (Hons)	BSc (Hons)
UCAS CODE	N100 3yr FT N101 4yr SW	NN12 3yr FT NNC2 4yr SW	N500 3yr FT N501 4yr SW
<b>FIRST-YEAR MODULES</b>			
Business Economics	C	C	
Foundations of Marketing		C	C
People, Work and Organisations/Work in Context	C	O	C
Principles of Responsible Management and Practice	C	C	C
Fundamentals of Artificial Intelligence and Data Analytics	O	O	C
Principles and Practice of International Business	C	C	C
Introduction to Accounting		C	
Finance and Accounting for Managers			C
<b>SECOND-YEAR MODULES</b>			
Entrepreneurship and Employability	C	C	C
Human Resource Management	C	O	
Business, Law and Ethics	C	C	O
Strategic Management	C	C	O
Financial Management	O	O	
Marketing Management and Strategy in a Digital Age	O	O	C
Marketing Management and Strategy in a Digital World			C
Entrepreneurship, Creativity and Innovation	O	O	O
International Business Strategy	O	C	
Digital and Social Media Marketing			C
Digital Campaign Planning and Content Management		C	O
Consumer Behaviour and Digital Insights	O	O	C
Organisational Design and Analysis	O		O
Management Accounting	O		
Multinational Finance and Investment	O		
Auditing	O		
Integrated Marketing Communications	O		C
European Business and Management		C	O
Cross Cultural Management		C	
Big Data Analytics for Business		O	
University Elective		O	O
<b>FINAL-YEAR MODULES</b>			
Final Year Business Project			C
Business Ethics and Social Responsibility	O		
Empirical Methods in Accounting and Finance	O	C	
Current Issues in International Business	O		C
Consumer Insight	O		
International Accounting and Reporting	O	O	C
Product and Corporate Brand Management	O		C
Reward Development and Management		O	
Applied Business Analytics and Simulation		O	
Risk Management and Derivatives		O	
Interactive Services Marketing	O	C	O
Multinationals in Emerging Economies	O	O	O
European Business and Management			O
University Elective			O



UNDERGRADUATE

# Management and Business Analytics



Designed to equip you with the necessary technical and non-technical skills to succeed as business managers of the future.

## Entry requirements

A levels: **112 UCAS points** with no specific subject requirements, plus a minimum of GCSE English and Mathematics at grade C or grade 4 or above (equivalents accepted).

Minimum IELTS 6.0 or equivalent.

**C** = Core module  
**O** = Option module

Start date for this course is September.

Current modules 2021/22.  
Programmes are reviewed annually.

DEGREE	BSc (Hons)	
	N102	3yr FT N103 4yr SW
<b>FIRST-YEAR MODULES</b>		
Fundamentals of Artificial Intelligence and Data Analytics	C	
Foundations of Marketing	C	
Finance and Accounting for Managers	C	
Operations and Technology Management	C	
Principles of Responsible Management and Practice	C	
People, Work and Organisations	C	
<b>SECOND-YEAR MODULES</b>		
Big Data Analytics for Business	C	
Entrepreneurship and Employability	C	
International Business Strategy	C	
Business Forecasting and Analysis	C	
Business, Law and Ethics	C	
Strategic Management	O	
Entrepreneurship, Creativity and Innovation	O	
Integrated Marketing Communications	O	
Organisational Design and Analysis	O	
<b>FINAL-YEAR MODULES</b>		
Final Year Business Project	C	
Applied Business Analytics and Simulation	C	
Artificial Intelligence for Business	C	
Digital Campaign Planning and Content Management	O	
Leading and Managing People	O	
Risk Management and Derivatives	O	
Business Ethics and Social Responsibility	O	
Multinationals in Emerging Economies	O	
Logistics and Supply Chain Management	O	

UNDERGRADUATE

# Finance and Business Analytics



**Gain technical data science skills and a deep understanding of the application of analytics within the context of financial management.**

## Entry requirements

A levels: **112 UCAS points** with no specific subject requirements, plus a minimum of GCSE English and Mathematics at grade C or grade 4 or above (equivalents accepted).

Minimum IELTS 6.0 or equivalent.

**C** = Core module  
**O** = Option module

Start date for this course is September.

Current modules 2021/22.  
Programmes are reviewed annually.

DEGREE	BSc (Hons)
UCAS CODE	N301 3yr FT N302 4yr SW
<b>FIRST-YEAR MODULES</b>	
Fundamentals of Artificial Intelligence and Data Analytics	C
Introduction to Finance	C
Introduction to Accounting	C
Foundations of Marketing	C
Principles of Responsible Management and Practice	C
Business Economics	C
<b>SECOND-YEAR MODULES</b>	
Big Data Analytics for Business	C
Entrepreneurship and Employability	C
Financial Management	C
Business Forecasting and Analysis	C
Business, Law and Ethics	C
Multinational Finance and Investment	C
<b>FINAL-YEAR MODULES</b>	
Final Year Business Project	C
Applied Business Analytics and Simulation	C
Risk Management and Derivatives	C
Artificial Intelligence for Business	C
Auditing	O
Taxation	O
Leading and Managing People	O
Business Ethics and Social Responsibility	O
Cross Cultural Management	O

UNDERGRADUATE

# Human Resource Management

**CIPD**  
Approved centre

**Gain the skills needed to operate effectively in the contemporary global business environment.**

## Entry requirements

A levels: **112 UCAS points** with no specific subject requirements, plus a minimum of GCSE English and Mathematics at grade C or 4 or above (equivalents accepted).

Minimum IELTS 6.0 or equivalent.

**C** = Core module  
**O** = Option module

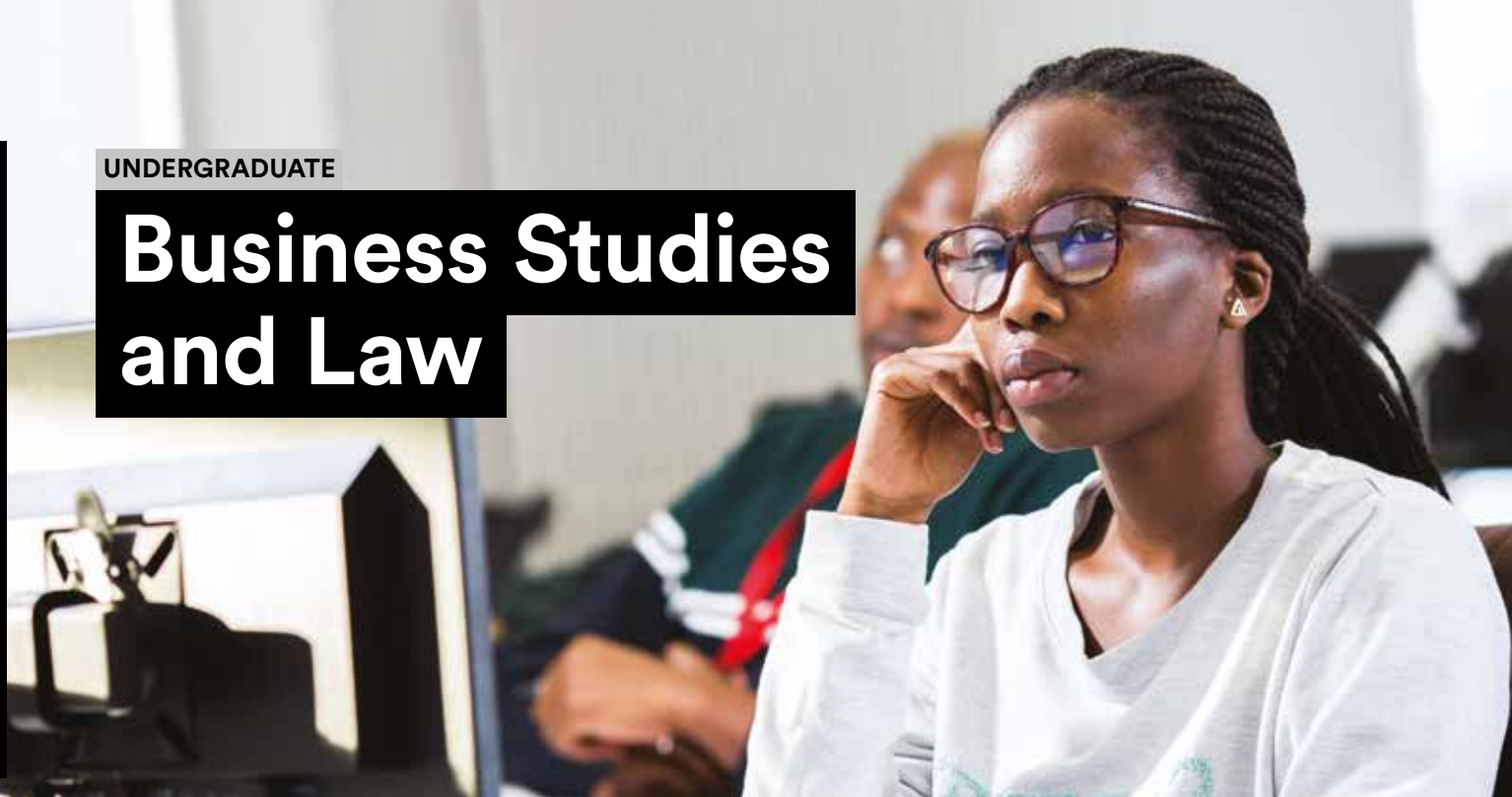
Start date for this course is September.

Current modules 2021/22.  
Programmes are reviewed annually.

DEGREE	BSc (Hons)
UCAS CODE	N600 3yr FT N601 4yr SW
<b>FIRST-YEAR MODULES</b>	
Foundations of Marketing	C
Introduction to Accounting	C
Operations and Technology Management	C
People, Work and Organisations/Work in Context	C
Principles of Responsible Management and Practice	C
Business Economics	O
Introduction to Finance	O
Principles and Practice of International Business	O
Fundamentals of Artificial Intelligence and Data Analytics	O
<b>SECOND-YEAR MODULES</b>	
Business, Law and Ethics	C
Entrepreneurship and Employability*	C
Human Resource Management	C
International Business Strategy	C
Organisational Design and Analysis	C
European Business and Management	O
Integrated Marketing Communications	O
Management Accounting	O
Multinational Finance and Investment	O
Strategic Management	O
University elective	O
<b>FINAL-YEAR MODULES</b>	
Final Year Business Project	C
Leading and Managing People	C
Contemporary Developments in Employee Relations	C
Reward, Development and Talent Management	C
Business Ethics and Social Responsibility	O
Cross Cultural Management	O
Multinationals in Emerging Economies	O
Business Ethics and Social Responsibility	O

UNDERGRADUATE

# Business Studies and Law



**Study the interface between business activity and the legal framework within which it operates.**

## Entry requirements

A levels: **112 UCAS points** with no specific subject requirements. Plus a minimum of GCSE English Language and Maths at grade C or 4 (equivalents accepted).

Minimum IELTS 6.0 or equivalent.

**C** = Core module  
**O** = Option module

Start date for this course is September.

Current modules 2021/22.  
Programmes are reviewed annually.

DEGREE	BSc (Hons)
UCAS CODE	NM11 3yr FT NM21 4yr SW
<b>FIRST-YEAR MODULES</b>	
Contract Law	C
Introduction to Legal Skills	C
Legal System: Sources & Institutions	C
Business, Law and Ethics	C
People, Work and Organisations/Work in Context	O
Introduction to Accounting	O
Introduction to Finance	O
Foundations of Marketing	O
Principles and Practice of International Business	O
Finance and Accounting for Managers	O
Business Economics	O
Operations and Technology Management	O
<b>SECOND-YEAR MODULES</b>	
Clinical and Employability Skills in Context	C
Public Law	O
Tort Law	O
EU and International Law	O
<b>FINAL-YEAR MODULES</b>	
Law Dissertation	C
Choose from a wide range of specialist optional modules, please see our website	O



UNDERGRADUATE

# International Relations, Politics and Security Studies

**We are the world's oldest university centre for the study of peace and conflict.**

## Entry requirements

A levels: **112 UCAS points** - BBC with no specific subject requirements. Plus a minimum of GCSE English at grade C or 4 (equivalents accepted).

Minimum IELTS 6.0 or equivalent.

**C** = Core module  
**O** = Option module

Start date for this course is September.

Current modules 2021/22.  
Programmes are reviewed annually.

DEGREE	BA (Hons)
UCAS CODE	N600 3yr FT N601 4yr SW
<b>FIRST-YEAR MODULES</b>	
Politics and the State	C
Understanding the International System	C
Challenges and Approaches to Development	C
Issues in World Politics	C
Peace and Violence: Theories, Cases and Challenges	C
<b>SECOND-YEAR MODULES</b>	
Analysing Contemporary Conflict	C
Contemporary International Relations	C
Politics and Processes of Foreign Policy	C
Security: Concepts, Constructions and Analyses	C
Power Shifts: Regional and Global Challenges	O
Peacebuilding, Conflict and Security	O
Globalisation and Global Governance	O
<b>FINAL-YEAR MODULES</b>	
Dissertation	C
International Policy Processes in Practice	C
The Politics of International Crisis Response	C
Authoritarianism, Nationalism and Populism	O
Politics and Security in Africa	O
Revolutions and Regime Change	O
Technology, Violence and War	O
Politics and Security in the Middle East	O
Creative Conflict Transformation	O
Africa Study Visit	O

UNDERGRADUATE

# Law

**Tailor your studies to particular aspects of law in your final year.**

## Entry requirements

A levels: **112 UCAS points** with no specific subject requirements, plus a minimum of GCSE English and Maths at grade C or grade 4 or above (equivalents accepted).

Minimum IELTS 6.0 or equivalent.

**C** = Core module  
**O** = Option module

Start date for all these courses is September.

Current modules 2021/22.  
Programmes are reviewed annually.

DEGREE	Law	Law with Business and Management
	LLB (Hons)	LLB (Hons)
UCAS CODE	M100 3yr FT M101 4yr SW	MN12 3yr FT MN22 4yr SW
<b>FIRST-YEAR MODULES</b>		
Contract Law	C	C
Human Rights	C	C
Introduction to Legal Skills	C	C
Legal System: Sources and Institutions	C	C
Public Law	C	
Law of Tort	C	C
People, Work and Organisations/Work in Context		O
Introduction to Accounting	O	O
Introduction to Finance	O	O
Foundations of Marketing	O	O
Principles of Responsible Management and Practice	O	O
Finance and Accounting for Managers	O	O
Business Economics	O	O
Operations and Technology Management	O	O
<b>SECOND-YEAR MODULES</b>		
Clinical and Employability Skills in Context	C	C
Criminal Law	C	C
EU and International Law	C	C
Equity & Trusts	C	
Public Law		C
Land Law	C	C
Law in the Community: Clinic Route	O	
Law in the Community: Public Legal Education Route	O	
Organisational Design and Analysis		O
Management Accounting		O
Strategic Management		O
European Business and Management		O
Multinational Finance and Investment		O
Auditing		O
Integrated Marketing Communications		O
Management of Information Systems		O
<b>FINAL-YEAR MODULES</b>		
Law Dissertation	O	O
Equity & Trusts		C
Extended Law Dissertation	O	C
<b>Choose from a wide range of optional modules, please see our website</b>	O	

UNDERGRADUATE

# Psychology



**Vibrant research-led environment with progression routes to Master's and PhD courses.**

## Entry requirements

A levels: **112 UCAS points - BBC** with no specific subject requirements. Plus a minimum of GCSE English and Maths grade C or 4 (equivalents accepted).

Minimum IELTS 6.0 or equivalent.

**C** = Core module  
**O** = Option module

Start date for all these courses is September.

Current modules 2021/22.  
Programmes are reviewed annually.

DEGREE	Psychology	Psychology with Counselling
	BSc (Hons) C801 3yr FT	BSc (Hons) C8B9 3yr FT
<b>FIRST-YEAR MODULES</b>		
Brain and Behaviour	C	C
Understanding Social Development	C	C
Introduction to Research Methods in Psychology	C	C
Critical and Philosophical Issues in Psychology	C	C
Applications of Professional Psychology	C	
Thinking Psychologically at Bradford	C	C
Introduction to Counselling		C
<b>SECOND-YEAR MODULES</b>		
Cognitive Psychology	C	
Social Psychology	C	C
Quantitative Research Methods and Data Analysis	C	C
Methodological Issues and Qualitative Research	C	C
Developmental Psychology	C	C
Psychobiology and Neuroscience	C	C
Issues in Counselling		C
<b>FINAL-YEAR MODULES</b>		
Research Project in Psychology	C	
Research Project in Psychology with Counselling		C
Abnormal Psychology, Health and Intervention	O	C
Cognitive Psychology		C
Counselling in Practice		C
Forensic Psychology	O	O
Advanced Issues in Child Development in Education Contexts	O	
Advanced Issues in Neuropsychology	O	
Psychology of Health and Eating	O	O
Psychological Life Skills and Employability	O	O
University Elective module	O	O

## UNDERGRADUATE

# Sociology and Criminology

Understand the diverse nature of society through a range of theoretical and practical, real-world vantage points.

## Entry requirements

A levels: **96 UCAS - points** CCC with no specific subject requirements. Plus a minimum of GCSE English at grade C or 4 (equivalents accepted).

Minimum IELTS 6.0 or equivalent.

**C** = Core module  
**O** = Option module

Start date for all these courses is September.

Current modules 2021/22.  
Programmes are reviewed annually.

DEGREE	Criminology and Criminal Behaviour	Sociology
	BA (Hons)	BA (Hons)
UCAS CODE	LM20 3yr FT LM21 4yr SW	L304 3yr FT L305 4yr SW
<b>FIRST-YEAR MODULES</b>		
A Critical History of Crime and Punishment	C	
Criminological Theory	C	
Introduction to Crime and Criminal Justice	C	
Introduction to Psychology	C	
Studying Social Sciences: A Critical Approach	C	C
Understanding Classical Sociology		C
Sociology of Identity and the Self		C
Contemporary Sociological Theory in Everyday Life		C
The History of Sociological Ideas: From Modernity to Post-modernity		C
British Society Since 1945: Rethinking History	O	C
Introduction to Forensic and Crime Scene Investigation	O	
<b>SECOND-YEAR MODULES</b>		
Constructing Mental Health and Crime	C	
Legal and Moral Constructions of Crime and Criminal Behaviour	C	
Psychology and Crime: Victims and Offenders	C	
Applying Social Science in Real-World Contexts: Research and Employment	C	C
Social Science Methodologies: Interpreting the Social World	C	C
Race and Ethnicity		C
Theories of Group Interaction		C
Popular Culture		C
University Elective module	C	C
<b>FINAL-YEAR MODULES</b>		
Dissertation	C	C
Contemporary Criminal Justice	C	
Models of Forensic Psychology	C	
Work Placement	C	O
The Sociology of Health: Cultures, Causes and Cures		C
The Sociology of Education: Social Transitions and Inequalities		C
Global Inequality and Sustainable Societies		O
The Sociology of Consumption, Taste and Identity		O
University Elective module		O



UNDERGRADUATE

# Social Work and Social Care

**Gain a professional social work degree and become eligible to register as a qualified social worker.**

## Entry requirements

A levels: **Social Work - 120 UCAS points - BBB** with no specific subject requirements. Plus a minimum of GCSE English and Maths grade C or 4 (equivalents accepted).

Must have 100 hours of relevant social work experience - see website for details.

Minimum IELTS 7.0 or equivalent.

A-levels: **Working with Children, Young People and Families - 112 UCAS points - BBC** with no specific subject requirements. Plus a minimum of GCSE English grade C or 4 (equivalents accepted).

Minimum IELTS 6.0 or equivalent.

**C** = Core module  
**O** = Option module

Start date for all these courses is September.

Current modules 2021/22.  
Programmes are reviewed annually.

DEGREE	Social Work	
	BA (Hons) L500 3yr FT	BA (Hons) L590 3yr FT L591 4yr SW
<b>FIRST-YEAR MODULES</b>		
Introduction to Social Work	C	
Social Ethics and Values	C	C
Academic Personal and Professional Development	C	C
Communication Skills: Children and Adults	C	
Readiness For Social Work Practice	C	
Service Users' and Carers' Perspectives	C	
Engaging and Communicating with Children, Young People and Families		C
Transition and Development in Children and Young People		C
Attachment Theory in Practice		C
Ideology, Politics and Social Policy		C
<b>SECOND-YEAR MODULES</b>		
Child and Family Social Work	C	
Law	C	
Practice Learning 1	C	
Working with Adults	C	
Mental Distress across the Life Course	C	
Direct Work with Children		C
Effective Interventions with Families		C
Research Practice		C
Children and Interagency Work		C
Working with Children in Educational Contexts		C
Learning from Practice		O
Sociology and the Family		O
<b>FINAL-YEAR MODULES</b>		
Cultural and International Perspectives in Social Work	C	
Leadership and Management in Social Work	C	
Research Methods for Social Workers	C	
Practice Learning 2	C	
Childcare Law		C
Mental Distress, Recovery, Resilience and Wellbeing		C
Children, Disability and Inclusive Practice		C
Dissertation		C
Project Management in Social Care		O

## POSTGRADUATE

# Faculty of Management, Law and Social Sciences

**The School of Management is dedicated to delivering cutting-edge course content for our students.**

Our refreshed and innovative Master's courses have been designed with your future employability in mind and are informed by the latest research and conversations with those who are shaping the future of their disciplines.

We continue to partner and work with major employers such as Google, BBC and SAP, who are on our International Advisory Board, to ensure our syllabus deals with contemporary issues such as data analytics.

Many of our Master's programmes are accredited by professional accreditation bodies such as ACCA, CIM, CIPD, CIPS and CILT.

As a School we are part of an elite group to hold the triple-crown of accreditations. This means your qualification will be recognised around the world.

## POSTGRADUATE

## Finance and Investment

**Developing the careers of finance professionals worldwide.**

### Entry requirements

**2:2 or above** in accounting and finance, economics, management (with a significant component of economics and/or accounting and finance) or a quantitative science such as mathematics, physics or engineering from an approved higher education institution.

Equivalent professional qualifications will also be eligible if supported with appropriate practical experience in one of the areas mentioned above.

Minimum IELTS 6.0 or equivalent.

**C** = Core module  
**O** = Option module

Start date for this course is September.

Current modules 2020/21.  
Programmes are reviewed annually.

DEGREE	MSc 12 months full-time
<b>STAGE ONE AND TWO MODULES</b>	
Business Economics	C
Contemporary Issues in Accounting and Finance	C
Asset Pricing and Financial Markets	C
Quantitative Methods in Finance	C
Derivatives Pricing and Valuation	C
International Finance	C
Plus optional modules – see website	O
<b>STAGE THREE MSc MODULE</b>	
Dissertation	C



## POSTGRADUATE

# Accounting and Finance

Equip yourself with the principles of financial management for global business.

## Entry requirements

**2:2 or above** in accounting and finance, economics, or business and management from an approved higher education institution.

Equivalent professional qualifications will also be eligible if supported with appropriate practical experience in one of the areas mentioned above.

Minimum IELTS 6.0 or equivalent.

**C** = Core module **O** = Option module

Start date for this course is September.

Current modules 2020/21.  
Programmes are reviewed annually.

DEGREE	MSc 12 months full-time
<b>STAGE ONE AND TWO MODULES</b>	
Business Economics	<b>C</b>
Contemporary Issues in Accounting and Finance	<b>C</b>
International Banking	<b>C</b>
Quantitative Methods in Finance	<b>C</b>
International Finance and Accounting	<b>C</b>
Corporate Finance	<b>C</b>
Plus optional modules – see website	<b>O</b>
<b>STAGE THREE MSc MODULE</b>	
Dissertation	<b>C</b>



## POSTGRADUATE

# Financial Technology

Develop the skills needed to build a career in the rapidly expanding financial technology field.

## Entry requirements

**2:2 or above** UK Honours degree, or an equivalent internationally recognised qualification, in any subject. Work experience is not required.

Applicants with non-degree qualifications will be considered where they have relevant work experience (minimum 3 years full-time), and will be assessed on an interview basis.

Minimum IELTS 6.5 or equivalent.

**C** = Core module **O** = Option module

Start date for this course is September.

Also available via distance learning.

Current modules 2020/21.  
Programmes are reviewed annually.

DEGREE	MSc 12 months full-time MSc 24 months distance learning
<b>STAGE ONE AND TWO MODULES</b>	
Quantitative Methods in Finance	<b>C</b>
Asset Pricing & Financial Markets	<b>O</b>
Fundamentals of Financial Technology, Blockchain, and Value Creation	<b>C</b>
Business Data Analytics	<b>O</b>
Machine Learning & Artificial Intelligence in Finance	<b>C</b>
FinTech Regulation, Compliance, Ethics and Risk Management	<b>C</b>
International Finance	<b>C</b>
Corporate Financial Management	<b>O</b>
Accounting and Finance	<b>O</b>
Plus optional modules – see website	<b>O</b>
<b>STAGE THREE MSc MODULE</b>	
Dissertation	<b>C</b>

## POSTGRADUATE

# Human Resource Management

A globally recognised postgraduate qualification for HR professionals, accredited by the Chartered Institute of Personnel and Development (CIPD).

### Entry requirements

**2:2 or above** in any discipline from an approved higher education institution. Equivalent professional qualifications will also be eligible if supported with appropriate practical experience in Human Resources Management.

Minimum IELTS 6.0 or equivalent.

**C** = Core module **O** = Option module

Start date for this course is September.

Current modules 2020/21.  
Programmes are reviewed annually.

DEGREE	MSc 12 months full-time
<b>STAGE ONE AND TWO MODULES</b>	
HRM in Context*	C
Leading, Managing and Developing People*	C
Employment Law*	C
Coaching and Leadership Development*	C
Developing Skills for Business Leadership*	C
Human Resource Development*	C
Employee Relations*	C
Plus optional modules – see website	O
<b>STAGE THREE MSc MODULE</b>	
Dissertation	C

\* Modules required for CIPD professional membership



## POSTGRADUATE

# Logistics, Data Analytics and Supply Chain Management

Broaden your knowledge and secure a career in the logistics, supply chain and transport field.

### Entry requirements

**2:2 or above** in business and management, engineering, or related discipline from an approved higher education institution. Equivalent professional qualifications will also be eligible if supported with appropriate practical experience in this field.

Minimum IELTS 6.0 or equivalent.

**C** = Core module **O** = Option module

Start date for this course is September.

Current modules 2021/22.  
Programmes are reviewed annually.

DEGREE	MSc 12 months full-time
<b>STAGE ONE AND TWO MODULES</b>	
Emerging Issues in Logistics and Supply Chain Management	C
Business Data Analytics	C
Supply Chain Analytics and Technology Management	C
Procurement Fundamentals and Quality Systems	C
Accounting and Finance	C
Operations Management	C
Plus optional modules – see website	O
<b>STAGE THREE MSc MODULE</b>	
Dissertation	C



## POSTGRADUATE

# Applied Artificial Intelligence and Data Analytics

Acquire the skills and professional insight you need to launch a career in Artificial Intelligence and Data Analytics.

## Entry requirements

**2:2 or above** UK Honours degree, or an equivalent internationally recognised qualification, in any STEM or non-STEM-related subjects. Work experience is not required.

Mature students considered on a case by case basis. Applicants with non-degree qualifications also considered with relevant work experience (minimum 3 years' full-time professional problem-solving experience).

Minimum IELTS 6.0 or equivalent.

**C** = Core module **O** = Option module

Start date for this course is September or January.

Current modules 2021/22.

Programmes are reviewed annually.

DEGREE	MSc 12 months full-time MSc 24 months part-time
<b>STAGE ONE AND TWO MODULES</b>	
Business Data Analytics	C
Safe AI: Ethics, Law and Governance	C
Developing Skills for Business Leadership	C
Artificial Intelligence and Data Science	C
Applied Machine Learning and Big Data Strategy	C
Entrepreneurship & Innovation	C
Plus optional modules – see website	O
<b>STAGE THREE MSc MODULE</b>	
Capstone Dissertation	C



## POSTGRADUATE

# Digital and Strategic Marketing

Acquire new marketing skills with an international perspective.

## Entry requirements

**2:2 or above** in any discipline from an approved higher education institution. Equivalent professional qualifications will also be eligible if supported with appropriate practical experience in Marketing.

Minimum IELTS 6.0 or equivalent.

**C** = Core module **O** = Option module

Start date for this course is September.

Current modules 2021/22.

Programmes are reviewed annually.

DEGREE	MSc 12 months full-time
<b>STAGE ONE AND TWO MODULES</b>	
Marketing, Planning and Strategy	C
Consumer Behaviour and Insights in the Digital Age	C
Marketing Communications in the Digital World	C
International Marketing	C
Digital Marketing, Campaign Planning and Analytics	C
Digital Business and Marketing Strategy Simulation	C
Plus optional modules - see website	O
<b>STAGE THREE MSc MODULE</b>	
Dissertation	C



## POSTGRADUATE

# Management

**Excellent facilities, and a highly trained, professional faculty.**

**Entry requirements**

**2:2 or above** not necessarily in business and management. Those without a first degree but with appropriate professional qualifications and work experience will also be considered.

Minimum IELTS 6.0 or equivalent.

**C** = Core module **O** = Option module

Start date for this course is September.

Current modules 2020/21.

Programmes are reviewed annually.

DEGREE	MSc 12 months full-time
<b>STAGE ONE AND TWO MODULES</b>	
Business Economics	<b>C</b>
Global Technology and Innovation Management	<b>C</b>
Human Resource Development	<b>C</b>
Marketing Planning and Strategy	<b>C</b>
Operations Management	<b>C</b>
Strategic Management	<b>C</b>
<b>Plus optional modules - see website</b>	<b>O</b>
<b>STAGE THREE MSc MODULE</b>	
Dissertation	<b>C</b>



## POSTGRADUATE

# Finance, Accounting and Management

**Learn in the industry-standard Bradford Trading Room, a simulated trading environment.**

**Entry requirements**

**2:2 or above** not necessarily in business and management. Those without a first degree but with appropriate professional qualifications and work experience will also be considered.

Minimum IELTS 6.0 or equivalent.

**C** = Core module **O** = Option module

Start date for this course is September.

Current modules 2021/22.

Programmes are reviewed annually.

DEGREE	MSc 12 months full-time
<b>STAGE ONE AND TWO MODULES</b>	
Business Economics	<b>C</b>
Strategic Management	<b>C</b>
Contemporary Issues in Accounting and Finance	<b>C</b>
Strategic Management Accounting	<b>C</b>
Marketing Planning and Strategy	<b>C</b>
Operations Management	<b>C</b>
<b>Plus optional modules - see website</b>	<b>O</b>
<b>STAGE THREE MSc MODULE</b>	
Dissertation	<b>C</b>



## POSTGRADUATE

# Marketing and Management

Study at one of Europe's leading business schools.

## Entry requirements

**2:2 or above** not necessarily in business and management. Those without a first degree but with appropriate professional qualifications and work experience will also be considered.

Minimum IELTS 6.0 or equivalent.

**C** = Core module **O** = Option module

Start date for this course is September.

Current modules 2020/21.  
Programmes are reviewed annually.

DEGREE	MSc 12 months full-time
<b>STAGE ONE AND TWO MODULES</b>	
Business and Economics	<b>C</b>
Digital Marketing, Campaign Planning and Analytics	<b>C</b>
Digital Business and Marketing Strategy Simulation	<b>C</b>
Operations Management	<b>C</b>
Marketing Planning and Strategy	<b>C</b>
Strategic Management	<b>C</b>
Consumer Behaviour and Insights in the Digital Age	<b>C</b>
<b>Plus optional modules - see website</b>	<b>O</b>
<b>STAGE THREE MSc MODULE</b>	
Dissertation	<b>C</b>



## POSTGRADUATE

# International Business and Management

Study the dynamics of a global business environment.

## Entry requirements

**2:2 or above** not necessarily in business and management. Those without a first degree but with appropriate professional qualifications and work experience will also be considered.

Minimum IELTS 6.0 or equivalent.

**C** = Core module **O** = Option module

Start date for this course is September.

Current modules 2021/22.  
Programmes are reviewed annually.

DEGREE	MSc 12 months full-time
<b>STAGE ONE AND TWO MODULES</b>	
Business Economics	<b>C</b>
Strategic Management	<b>C</b>
Global and Contemporary Issues in International Business	<b>C</b>
Principles and Practices in International Business	<b>C</b>
Marketing Planning and Strategy	<b>C</b>
Operations Management	<b>C</b>
Cross Cultural Management	<b>C</b>
<b>Plus optional modules - see website</b>	<b>O</b>
<b>STAGE THREE MSc MODULE</b>	
Dissertation	<b>C</b>



POSTGRADUATE

# European and International Business Management

Develop a truly international perspective on management, by sharing the experience of studying in three different European countries.

## Entry requirements

**2:1 or above** in a four-year bachelor's degree (in any field), or three-year bachelor's degree with professional experience and proficiency in English\* and either French or Spanish - lower-intermediate level (or higher) in the third language.

Applicants with a lower-intermediate level of either Spanish or French are encouraged to take the optional language intensive course offered.

Minimum IELTS 6.0 or equivalent.

**C** = Core module **O** = Option module

Start date for this course is September.

Current modules 2021/22.

Programmes are reviewed annually.

DEGREE	MSc 13-16 months full-time
<b>OCTOBER-MARCH (NANTES AND BILBAO)</b>	
Socioeconomic and Legal Aspects	<b>C</b>
Management of Organisations	<b>C</b>
Marketing and Logistics	<b>C</b>
Finance	<b>C</b>
Strategy	<b>C</b>
Business Languages and Culture	<b>C</b>
<b>APRIL-JULY (BRADFORD)</b>	
For optional modules - see website	<b>O</b>
<b>STAGE THREE MSc MODULE</b>	
Dissertation	<b>C</b>
<b>STAGE FOUR MODULE</b>	
3- to 6-month internship	<b>C</b>





**This is where I  
pursue my dreams**

Ellen Phiri, from Malawi  
MSc Finance, Accounting and Management

POSTGRADUATE

# International Legal Studies

The School of Law is highly experienced in the teaching of Law in an international and global context.

## Entry requirements

**2:2 or above** in a relevant subject (may include social science, humanities, or business and management). Non-law graduates will need to complete and pass the Foundations of Law and Skills module.

Minimum IELTS 6.0 or equivalent.

**C** = Core module **O** = Option module

Start date for this course is September.

Current modules 2021/22.  
Programmes are reviewed annually.

DEGREE	LLM 12 months full-time
<b>STAGE ONE AND TWO MODULES</b>	
Foundations of Law and Skills	<b>C</b>
Sustainable Development Law in Contemporary Business and Society	<b>C</b>
Regulatory Theory and Practice	<b>C</b>
LLM Dissertation	<b>C</b>
<b>Plus optional modules - see website</b>	<b>O</b>
<b>STAGE THREE LLM MODULE</b>	
Dissertation	<b>C</b>



POSTGRADUATE

# International Commercial Law (LLM)

Gain the core principles of regulation and enforcement within a modern commercial environment.

For entry onto our postgraduate law degrees, previous law qualifications are not required.

## Entry requirements

**2:2 or above** or equivalent in any subject, or relevant work experience at graduate level.

Minimum IELTS 6.0 or equivalent.

**C** = Core module  
**O** = Option module

Start date for this course is September.

Also available via distance learning.

Current modules 2021/22.  
Programmes are reviewed annually.

DEGREE	LLM 12-15 months full-time
<b>STAGE ONE AND TWO MODULES</b>	
Foundations of Law and Skills	<b>C</b>
Sustainable Development Law in Contemporary Business and Society	<b>C</b>
Regulatory Theory and Practice	<b>C</b>
LLM Dissertation	<b>C</b>
Plus optional modules - see website	<b>O</b>
<b>STAGE THREE LLM MODULE</b>	
Dissertation	<b>C</b>

In addition, students will be required to take a total of 60 credits of modules from the following (20 credits each) which will provide specific and in-depth knowledge in specialist aspects of commercial law:

- Commercial Dispute Resolution
- International Commercial Dispute Resolution
- International Intellectual Property Law
- International Banking and Finance
- Trade and Investment Law
- Cyber Law
- Regulation of Fintech and Virtual Assets
- Law of Taxation
- International Competition Law
- Regulation of Financial Markets and Securities

The final 20-credit module of the LLM in International Commercial Law is an elective which can either be chosen from the list above, from a wider pool of postgraduate subject modules from the School of Law such as Business, Human Rights and Environment, Petroleum Law, Climate Change Law, or modules from other departments such as the School of Management.

POSTGRADUATE

# International Human Rights Law and Development (LLM)

Apply the principles of human rights and development within a global context.

For entry onto our postgraduate law degrees, previous law qualifications are not required.

## Entry requirements

**2:2 or above** or equivalent in any subject, or relevant work experience at graduate level.

Minimum IELTS 6.0 or equivalent.

**C** = Core module  
**O** = Option module

Start date for this course is September.

Also available via distance learning.

Current modules 2021/22.  
Programmes are reviewed annually.

DEGREE	LLM 12-15 months full-time
<b>STAGE ONE AND TWO MODULES</b>	
Foundations of Law and Skills	C
Sustainable Development Law in Contemporary Business and Society	C
Regulatory Theory and Practice	C
LLM Dissertation	C
Plus optional modules - see website	O
<b>STAGE THREE LLM MODULE</b>	
Dissertation	C

In addition, students will be required to take a total of 60 credits of modules from the following (20 credits each) which will provide specific and in-depth knowledge in specialist aspects of human rights and development:

- Public International Law
- International Human Rights Law
- International Humanitarian Law
- Immigration and Refugee Law
- Peacekeeping and Peace Building
- Business Human Rights and Environment
- Policy Analysis of Governance and Development

The final 20-credit module of the LLM in International Human Rights Law and Development is an elective which can either be chosen from the list above, from a wider pool of postgraduate modules from the School of Law or from other departments such as the School of Management.

POSTGRADUATE

# Natural Resources and Environmental Law and Policy (LLM)

**Gain an outstanding grasp of the specialist aspects of human rights and development law and its application.**

**For entry onto our postgraduate law degrees, previous law qualifications are not required.**

## Entry requirements

**2:2 or above** or equivalent in any subject, or relevant work experience at graduate level.

Minimum IELTS 6.0 or equivalent.

**C** = Core module  
**O** = Option module

Start date for this course is September.

Also available via distance learning.

Current modules 2021/22.  
Programmes are reviewed annually.

DEGREE	LLM 12-15 months full-time
<b>STAGE ONE AND TWO MODULES</b>	
Foundations of Law and Skills	C
Sustainable Development Law in Contemporary Business and Society	C
Regulatory Theory and Practice	C
LLM Dissertation	C
Plus optional modules - see website	O
<b>STAGE THREE LLM MODULE</b>	
Dissertation	C

In addition, students will be required to take a total of 60 credits of modules from the following subjects which will provide specific and in-depth knowledge in specialist aspects of human rights and development:

- Climate Change Law and Policy
- International Petroleum Law
- International Environmental Law
- Natural Resource Governance
- Business, Human Rights and Environment

The final 20-credit module of the LLM in Natural Resources, and Environmental Law and Policy is an elective which can either be chosen from the list above, or from a wider pool of postgraduate modules from the School of Law or from other departments such as Management or Peace Studies and International Development.

## POSTGRADUATE

# Executive MBA in Dubai

Our Executive MBA in Dubai is one of the first and most highly regarded in the UAE.

## Entry requirements

**2:1 or above** in a good first degree/overseas equivalent or relevant professional qualification. Plus at least three years' postgraduate work experience and/or significant management/business leadership experience (normally eight years).

Minimum IELTS 6.5 or equivalent.

**C** = Core module **O** = Option module

Start date for this course is October or April.

Current modules 2020/21.  
Programmes are reviewed annually.

DEGREE	2-3 years part-time
<b>STAGE ONE AND TWO MODULES</b>	
Competitiveness through Technology and Innovation	<b>C</b>
Leadership for Transformational Change	<b>C</b>
Digital Marketing, Branding and Strategy	<b>C</b>
Accounting and Economics for Decision Making	<b>C</b>
Plus optional modules - see website	<b>O</b>
<b>STAGE THREE MBA MODULE</b>	
MBA Management Project	<b>C</b>

\* International study opportunities available



## POSTGRADUATE

# MBA Distance Learning

Online MBA ranked 11th in the world (FT MBA rankings 2021).

## Entry requirements

**2:1 or above** in a good first degree/overseas equivalent or relevant professional qualification. Plus at least three years' postgraduate work experience and/or significant management/business leadership experience (normally eight years).

Minimum IELTS 6.5 or equivalent.

**C** = Core module **O** = Option module

Start date for this course is October or April.

Current modules 2020/21.  
Programmes are reviewed annually.

DEGREE	2-3 years part-time
<b>STAGE ONE AND TWO MODULES</b>	
Competitiveness through Technology and Innovation	<b>C</b>
Leadership for Transformational Change	<b>C</b>
Digital Marketing, Branding and Strategy	<b>C</b>
Accounting and Economics for Decision Making	<b>C</b>
Plus optional modules - see website (can be studied in Dubai, Bradford, Toulouse or online)	<b>O</b>
<b>STAGE THREE MBA MODULE</b>	
MBA Management Project	<b>C</b>

\* International study opportunities available



POSTGRADUATE

# Innovation, Enterprise and Circular Economy MBA







The first global pioneer university and academic centre for the Circular Economy.

World No.1 for value for money Distance Learning MBA (Financial Times 2020).

## Entry requirements

**2:1 or above** in a good first degree/overseas equivalent or relevant professional qualification. Plus at least three years' postgraduate work experience and/or significant management/business leadership experience (normally eight years).

Minimum IELTS 6.5 or equivalent.

**C** = Core module

Start date for this course is October or April.

Current modules 2021/22.  
Programmes are reviewed annually.

DEGREE	2-4 years distance learning
<b>STAGE ONE AND TWO MODULES*</b>	
Circular Economy: Core Principles and Concepts	<b>C</b>
Materials, Resources, Energy and Competitiveness	<b>C</b>
Diversity, Scale and Development	<b>C</b>
Accounting and Economics for Decision aMaking	<b>C</b>
Digital Marketing, Branding and Strategy	<b>C</b>
Leadership for Transformational Change	<b>C</b>
Business Models for a Circular Economy	<b>C</b>
Enterprise and Innovation	<b>C</b>
<b>STAGE THREE MBA MODULE</b>	
MBA Management Project	<b>C</b>

\* International study opportunities available



POSTGRADUATE

# Executive DBA

**The pinnacle of management education. Designed for senior, experienced, professional managers.**

## Entry requirements

You should have a Bachelor's degree, plus an MBA (or equivalent) from an accredited institution. You will also need a high level of fluency in English and a minimum of five years' relevant managerial work experience.

The programme is taught, supervised and examined in English, so you must be able to prove your fluency in the language if it is not your first language.

Minimum IELTS 6.5 or equivalent.

## DBA

DBA 4-7 years part-time

The DBA is the pinnacle of management education. Designed for experienced senior managers and professionals looking for the next challenge in their career, the DBA provides an unprecedented fast-track to the status of global expert in a particular field.

You will make a significant contribution to the advancement of knowledge in your area of expertise while studying part-time and remaining at work, allowing you to practically apply your knowledge directly back to the workplace. You will open up a new realm of personal development and career opportunities including teaching at international business schools, high-level consultancy and board-level roles.

Your fellow DBA students are an elite group of about 25 international managers, who you will meet with, network and share ideas at several taught sessions in year one and two, and during your research phase via regular peer review workshops in different locations.



## POSTGRADUATE

# Economics and Finance for Development

Designed for those who wish to go on to work in an economics or finance policy capacity in government, the private sector, in development agencies or in the third sector.

## Entry requirements

**2:2 or above** in UK system or equivalent overseas qualification. Other relevant qualifications and experience are also seriously considered.

Minimum IELTS 6.0 or equivalent.

**C** = Core module **O** = Option module

Start date for this course is September.

Current modules 2021/22.

Programmes are reviewed annually.



DEGREE	MSc 12 months full-time
<b>STAGE ONE AND TWO MODULES</b>	
Economic Growth and Development	C
Applied Econometrics	C
International Economics	C
Finance for Development	C
Project Planning and Design	O
Project Finance and Appraisal	O
Assessing Development Practices, Needs and Outcomes	O
Natural Resource Governance	O
Sustainable Cities	O
Middle East Politics and Security Dynamics	O
Africa Study Visit	O
Gender Conflict and Development	O
Choose from a wide range of optional modules, see website	O
<b>STAGE THREE MSc MODULE</b>	
Dissertation	C

## POSTGRADUATE

# International Development Management

Get the critical and analytical skills to operate effectively in international development environments.

## Entry requirements

**2:2 or above** in UK system or equivalent overseas qualification. Other relevant qualifications and experience are also seriously considered.

Minimum IELTS 6.0 or equivalent.

**C** = Core module **O** = Option module

Start date for this course is September.

Current modules 2020/21.

Programmes are reviewed annually.

DEGREE	MA 12 months full-time
<b>STAGE ONE AND TWO MODULES</b>	
Issues in Development Theory	C
Assessing Development Practices, Needs and Outcomes	C
Policy Analysis for Governance and Development	C
African Politics and Security Dynamics	C
Natural Resource Governance	O
Sustainable Cities	O
Choose from a wide range of optional modules, see website	O
<b>STAGE THREE MA MODULE</b>	
Dissertation	C



## POSTGRADUATE

# Project Planning and Management

Study emerging techniques and approaches to project management such as PRINCE2™.

## Entry requirements

**2:2 or above** in UK system or equivalent overseas qualification. Other relevant qualifications and experience are also seriously considered.

Minimum IELTS 6.0 or equivalent.

**C** = Core module **O** = Option module

Start date for this course is September.

Current modules 2021/22.

Programmes are reviewed annually.

DEGREE	MSc 12 months full-time
<b>STAGE ONE AND TWO MODULES</b>	
Project Planning and Design	C
Project Finance and Appraisal	C
Project Implementation Management	C
Issues in Development Theory	O
Economic Growth for Development	O
Assessing Development Practices, Needs and Outcomes	O
Natural Resource Governance	O
Sustainable Cities	O
<b>Choose from a wide range of optional modules, see website</b>	O
<b>STAGE THREE MSc MODULE</b>	
Dissertation	C



## POSTGRADUATE

# Sustainable Development

Discover how we can meet the needs of the present without negatively impacting on the needs of the future.

## Entry requirements

**2:1 or above** in UK system or equivalent overseas qualification. Other relevant qualifications and experience are also seriously considered.

Minimum IELTS 6.0 or equivalent.

**C** = Core module **O** = Option module

Start date for this course is September.

Current modules 2020/21.

Programmes are reviewed annually.

DEGREE	MSc 12 months full-time
<b>STAGE ONE AND TWO MODULES</b>	
Critical Perspectives on Sustainable Development	C
Policy Analysis for Governance and Development	C
Sustainable Cities	C
African Politics and Security Dynamics	O
Issues in Development Theory	O
Gender, Conflict and Development	O
Natural Resource Governance	O
<b>Choose from a wide range of optional modules, see website</b>	O
<b>STAGE THREE MSc MODULE</b>	
Dissertation	C



## POSTGRADUATE

# Advanced Practice in Peacebuilding and Conflict Resolution

Our teaching and research in this area has gained a global reputation for its pioneering work.

## Entry requirements

**2:2 or above** in UK system or equivalent overseas qualification. Other relevant qualifications and experience are also seriously considered.

Minimum IELTS 6.0 or equivalent.

**C** = Core module **O** = Option module

Start date for this course is September.

Current modules 2021/22.

Programmes are reviewed annually.

DEGREE	MA 12 months full-time
<b>STAGE ONE AND TWO MODULES</b>	
Applied Conflict Research	C
Theories and Practices of Conflict Resolution	C
Creative Practice in Conflict Engagement and Peacebuilding	C
African Politics and Security Dynamics	O
Studying Peace in a Changing World	O
Natural Resource Governance	O
Choose from a wide range of optional modules, see website	O
<b>STAGE THREE MA MODULE</b>	
Dissertation (MA)	C



## POSTGRADUATE

# International Relations and Security Studies

Understand the origins and evolution of the international political and security system.

## Entry requirements

**2:2 or above** in UK system or equivalent overseas qualification. Other relevant qualifications and experience are also seriously considered.

Minimum IELTS 6.0 or equivalent.

**C** = Core module **O** = Option module

Start date for this course is September.

Current modules 2020/21.

Programmes are reviewed annually.

DEGREE	MA 12 months full-time
<b>STAGE ONE AND TWO MODULES</b>	
The International System in Theory and Context	C
Contemporary Security Challenges	C
Environment, Trafficking and Crime: Transnational Issues and International Governance	C
African Politics and Security Dynamics	O
Natural Resource Governance	O
Africa Study Visit	O
Middle East Politics and Security Dynamics	O
Gender, Conflict and Development	O
Choose from a wide range of optional modules, see website	O
<b>STAGE THREE MA MODULE</b>	
Dissertation (MA)	C



## POSTGRADUATE

# Peace, Conflict and Development

Be at the forefront of the debate on security and international conflict.

### Entry requirements

**2:2 or above** in UK system or equivalent overseas qualification. Other relevant qualifications and experience are also seriously considered.

Minimum IELTS 6.0 or equivalent.

**C** = Core module **O** = Option module

Start date for this course is September.

Current modules 2021/22.  
Programmes are reviewed annually.

DEGREE	MA 12 months full-time
<b>STAGE ONE AND TWO MODULES</b>	
Applied Conflict Research	C
Security and Development in Fragile and Conflict Affected Areas	C
Natural Resource Governance	C
African Politics and Security Dynamics	O
Gender, Conflict and Development	O
Terrorism and Political Violence	O
Middle East Politics and Security Dynamics	O
Assessing Development Practices, Needs and Outcomes	O
Choose from a wide range of optional modules, see website	O
<b>STAGE THREE MA MODULE</b>	
Dissertation (MA)	C



## POSTGRADUATE

# Peace, Resilience and Social Justice

Learn first-hand from policy advisers for a range of government and other agencies.

### Entry requirements

**2:2 or above** in UK system or equivalent overseas qualification. Other relevant qualifications and experience are also seriously considered.

Minimum IELTS 6.0 or equivalent.

**C** = Core module **O** = Option module

Start date for this course is September.

Current modules 2021/22.  
Programmes are reviewed annually.

DEGREE	MA 12 months full-time
<b>STAGE ONE AND TWO MODULES</b>	
Studying Peace in a Changing World	C
Social-Ecological Resilience: Discourses and Practices	C
Creative Practice in Conflict Engagement and Peacebuilding	C
Applied Conflict Research	O
African Politics and Security Dynamics	O
Natural Resource Governance	O
Sustainable Cities	O
Choose from a wide range of optional modules, see website	O
<b>STAGE THREE MA MODULE</b>	
Dissertation (MA)	C



POSTGRADUATE

# Psychology



## A fast-track route to eligibility for Graduate Basis for Chartered Membership with the British Psychological Society.

### Entry requirements

**2:2 or above** in UK system (not BPS-accredited) or equivalent overseas qualification. Other relevant qualifications and experience are also seriously considered.

Minimum IELTS 6.0 or equivalent.

**C** = Core module **O** = Option module

Start date for this course is September.

Current modules 2021/22.

Programmes are reviewed annually.

DEGREE	MSc 12 months full-time*
<b>STAGE ONE AND TWO MODULES</b>	
Cognitive Psychology	C
Social Psychology (Level 7)	C
Research Methods in Psychology	C
Psychobiology and Neuroscience	C
Developmental Psychology	C
Dissertation - Psychology	C
Research Project in Psychology	C
The Psychology of Health and Eating	O
Forensic Psychology	O
<b>STAGE THREE MSc MODULE</b>	
Dissertation	C

\* The MSc degree is accredited by the British Psychological Society but, if exiting at Postgraduate Diploma level, the Research Project in Psychology is required for BPS accreditation.



POSTGRADUATE

# Psychology of Health and Wellbeing

## Study the theory and practical applications of clinical psychology, neuropsychology, health psychology and cognitive neuroscience.

### Entry requirements

**2:2 or above** or equivalent overseas qualification. We will also consider degrees in allied subjects. GCSE English and Maths required (or equivalents).

Minimum IELTS 6.5 or equivalent.

**C** = Core module **O** = Option module

Start date for this course is September.

Current modules 2021/22.

Programmes are reviewed annually.

DEGREE	MSc 12 months full-time
<b>STAGE ONE AND TWO MODULES</b>	
Advanced Psychological Research Methods	C
Food and Behaviour	C
Topics and Theoretical Issues in Clinical Psychology	C
Putting Health into Context	C
Neurocognitive Health	C
MSc Research Project in Psychology of Health and Wellbeing	C
Psychological Life Skills and Employability	O
Advanced Professional Applications of Psychology	O
University Elective module	O
<b>STAGE THREE MSc MODULE</b>	
Dissertation	C



POSTGRADUATE

# Social Work



**Gain a professional social work Master's and become eligible to register as a qualified social worker.**

## Entry requirements

**Normally 2:1:** Honours degree. Relevant work experience (voluntary or paid) during the past two years is also required. Full details are on our website.

Minimum IELTS 7.0 or equivalent.

**C** = Core module

Start date for this course is September.

Current modules 2021/22.  
Programmes are reviewed annually.

DEGREE	MA 2 years full-time*
<b>YEAR ONE MODULES</b>	
Social Work Theories and Methods	C
Ethics, Professionalism and Reflective Practice	C
Interviewing and Communication Skills	C
Practice Placement Learning 1	C
Social Work with Children and Families	C
Social Work with Adults	C
Law for Social Work	C
<b>YEAR TWO MODULES</b>	
Mental Distress across the Life Course	C
Research Methods for Social Workers	C
Practice Placement Learning 2	C

\* This route is available for those who have UK Social Work experience

POSTGRADUATE

**PhD**

**School of Management**  
**School of Law**  
**School of Social Sciences**

**90% of our research demonstrates considerable impact on business practice and policy (REF 2014).**

#### Entry requirements

You should have a Bachelor's or Master's degree from an accredited institution. You will also need a high level of fluency in English.

The programme is taught, supervised and examined in English, so you must be able to prove your fluency in the language if it is not your first language.

Minimum IELTS 6.5 or equivalent.

#### PhD

PhD 3-4 years full-time

Research is at the heart of our teaching and learning at Bradford and at the forefront of new business and management ideas. Studying a PhD degree at the University of Bradford School of Management, Law or Social Sciences, places you at the core of the University's intellectual life and at the forefront of its worldwide quest to provide future generations with an essential flow of new business and management ideas.

We are one of the oldest university-based business schools with one of

the longest-established management PhD programmes in Europe.

We also encourage you to engage in teaching activities, providing you with valuable experience of higher education teaching and preparing you for the job market.

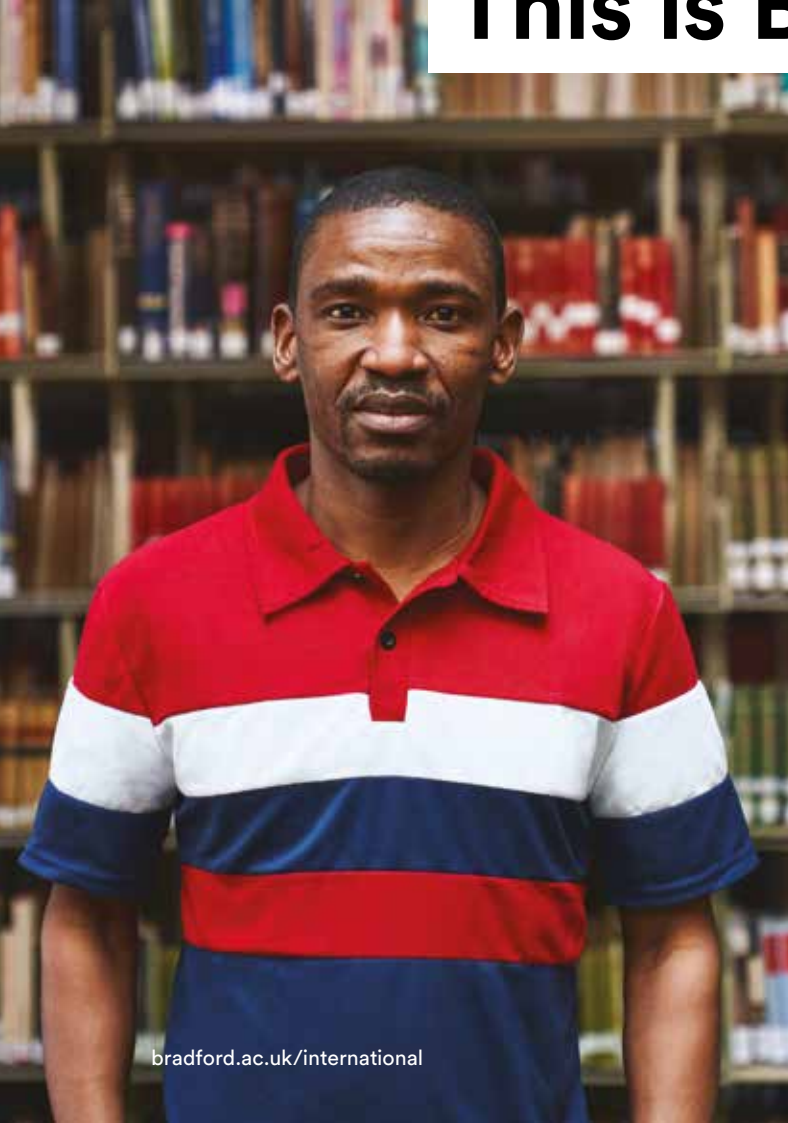
#### Special Features

- Specialist research centres and groups
- Personal supervision arrangement
- International, experienced, and highly committed faculty





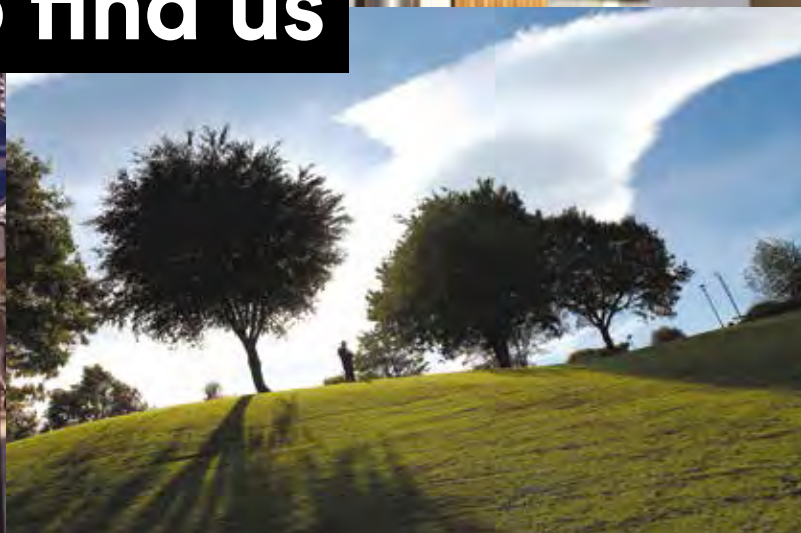
# This is Bradford







# How to find us



## Getting here

Bradford is easy to get to, located right in the middle of the UK with excellent road and rail links and its own international airport. An extensive coach service also connects most parts of the country with Bradford's Travel Interchange. The postcode for our campus is BD7 1DP (if you're using a Sat Nav use BD7 1AZ).

## By road

Bradford is connected to the national motorway network by the M62 and M606, which we recommend you use if arriving from the south, east or west. Use the A629/A650 via Skipton and Keighley if arriving from the north west, or the A1 or A19 if arriving from the north east. The University is clearly signposted on all major routes into the city. Approximate travel distances are:

London	200 miles (320 km)
Leeds	8 miles (13 km)
York	33 miles (53 km)
Manchester	35 miles (56 km)
Birmingham	120 miles (192 km)
Edinburgh	200 miles (320 km)

## By rail

Bradford Interchange has extensive rail links, many of which involve changing at Leeds. There are some direct trains from London to Bradford. From Bradford Interchange you can take the 576 buses which leave at regular intervals and pass the City Campus, taking 5 minutes. Or walking from the city centre only takes around 10-15 minutes. Approximate journey times are:

London (King's Cross)	3 hours
Leeds	20 minutes
York	1 hour
Manchester	1 hour
Birmingham	2.5 hours
Edinburgh	4 hours
Glasgow	4 hours

## By air

Leeds Bradford Airport has a range of daily domestic flights to/from destinations across the UK, as well as regular connecting flights to/from Amsterdam, Dublin, London and other major European locations. Manchester Airport, 50 miles (80 km) away, serves a range of international destinations.

If you are flying into Leeds Bradford or Manchester airports on certain dates prior to starting your course, you can make arrangements in advance to be picked up at the airport using our airport pick-up service. There is also a regular bus service from Leeds Bradford Airport to Bradford Interchange.

# Contact details

If you need more information about the University or our courses, we are always more than happy to hear from you.

## Course enquiries

+44 1274 233081

enquiries@bradford.ac.uk

www.bradford.ac.uk/  
international

Recruitment Support Team  
University of Bradford  
Bradford  
West Yorkshire  
BD7 1DP  
United Kingdom

## International exhibitions and fairs

Each year representatives from the University visit education exhibitions and fairs around the world. We would be delighted to meet you at one of these events.

To find out if we are coming to an education fair or exhibition in your country, please see [www.bradford.ac.uk/your-country](http://www.bradford.ac.uk/your-country)

## Overseas representatives

The University has appointed overseas representatives in various countries. They can provide course counselling and advisory services, and they can also help you to apply for your course or visa (if you need one).

Find out if we have an overseas representative near where you are at [www.bradford.ac.uk/your-rep](http://www.bradford.ac.uk/your-rep)

The University has a regional hub in Dubai where you can find out more about studying in Bradford or apply for one of our courses. The Regional Hub, Dubai also serves as a local centre for Bradford's prestigious Executive MBA programme.

The University also has a regional office in Beijing, China, helping students from throughout the East Asia region.

## Follow us online:

facebook.com/university.bradford

twitter.com/UniofBradford

youtube.com/UniversityofBradford

weibo.com/universityofbradford

t.qq.com/universityofbradford

## University of Bradford Regional Hub, Dubai

Block 2A  
F164 Dubai Knowledge Park  
P.O. Box 501723  
Dubai  
U.A.E.

+971 4 439 3694

www.bradford.ac.uk/  
dubai

admissions-int  
@bradford.ac.uk

## University of Bradford East Asia Office

Room O-2409,  
Kuntai International Mansion,  
No. 12 B Chaowai Dajie,  
Chaoyang District,  
Beijing  
100020  
China

+86 (10) 5879 7566

www.bradford.ac.uk/china

eastasia-office  
@bradford.ac.uk

# Acknowledgements

## Acknowledgements

This prospectus has been designed to give a general view of the international provisions available at the University of Bradford. If there is any information not included that you would have liked to see, or anything on which you would have liked more detail, then send your comments to the Marketing and Communications Department at the University ([marketing@bradford.ac.uk](mailto:marketing@bradford.ac.uk)).

Thanks to all students who helped in the production of this prospectus through testimonials, providing quotes, and agreeing to model for photographs.

Written and edited by the Marketing and Communications Department, University of Bradford.

2331/5,600/09/2022

## The University of Bradford – Confronting Inequality: Celebrating Diversity™

The University of Bradford is committed to promoting equality, diversity and an inclusive and supportive environment for students, staff and others closely associated with the University in conformity with the provisions of its Charter.

### Alcohol Impact policy

We at the University of Bradford are committed to providing students with a safe and responsible social life, which is demonstrated by our involvement with the NUS Alcohol Impact programme (<http://alcoholimpact.nus.org.uk>) and our increasing range of alcohol-free social activities.

We can arrange for this material to be transcribed into an accessible format such as Braille, large print, E-text (compatible with screen-reading software) or digital audio such as CD. Please contact Course Enquiries.

☎ +44 1274 233081

✉ [enquiries@bradford.ac.uk](mailto:enquiries@bradford.ac.uk)

## Terms & conditions

This Prospectus has been drafted in advance of the academic year to which it applies. Every effort has been made to ensure that the information contained in this Prospectus is fair and accurate at the time of publication. It is issued for the general guidance of students looking to study at the University of Bradford from September 2022, rather than being definitive. We will use our best endeavours not to make any changes to our academic programmes; however we recognise that exceptionally some changes may be necessary for the benefits of our students or to comply with external requirements. All changes will be made in line with the University's programme approval, monitoring and review procedures as set in the programme development website: [www.bradford.ac.uk/teaching-quality/programme-development/](http://www.bradford.ac.uk/teaching-quality/programme-development/)

Major alterations will be communicated to applicants as appropriate.

The University welcomes comments on its programmes from students, parents and other parties.

✉ [marketing-projects@bradford.ac.uk](mailto:marketing-projects@bradford.ac.uk)



Explore the University of Bradford and the city using our Virtual Experience. There are over 75 360-degree tours of our campus, teaching and learning spaces, accommodation, and social spaces that give a feel for student life at Bradford. You can even use a VR headset to view the tours.

[www.bradford.ac.uk/virtual-experience](http://www.bradford.ac.uk/virtual-experience)

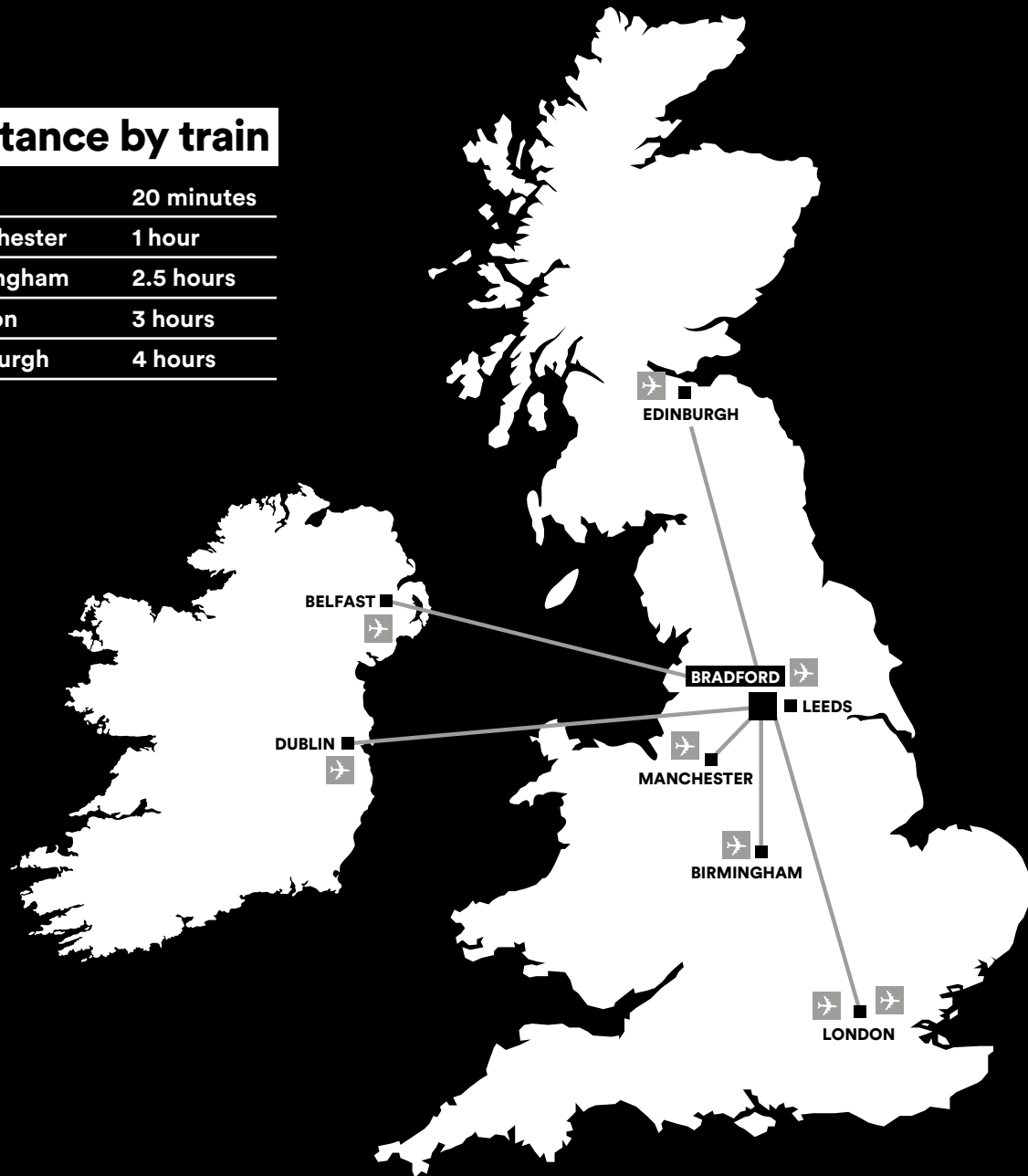


THE QUEEN'S  
ANNIVERSARY PRIZES  
For Honours and Distinction in Education  
2022



## Distance by train

Leeds	20 minutes
Manchester	1 hour
Birmingham	2.5 hours
London	3 hours
Edinburgh	4 hours



## Contact us

University of Bradford  
Bradford  
West Yorkshire  
BD7 1DP

✉ [enquiries@bradford.ac.uk](mailto:enquiries@bradford.ac.uk)

☎ +44 1274 23 3081

🖱 [bradford.ac.uk/international](http://bradford.ac.uk/international)